

SCIENTIFIC REPORTS

OPEN

Impact-related microspherules in Late Pleistocene Alaskan and Yukon “muck” deposits signify recurrent episodes of catastrophic emplacement

Jonathan T. Hagstrum¹, Richard B. Firestone², Allen West³, James C. Weaver⁴ & Ted E. Bunch⁵

Large quantities of impact-related microspherules have been found in fine-grained sediments retained within seven out of nine, radiocarbon-dated, Late Pleistocene mammoth (*Mammuthus primigenius*) and bison (*Bison priscus*) skull fragments. The well-preserved fossils were recovered from frozen “muck” deposits (organic-rich silt) exposed within the Fairbanks and Klondike mining districts of Alaska, USA, and the Yukon Territory, Canada. In addition, elevated platinum abundances were found in sediment analysed from three out of four fossil skulls. In view of this new evidence, the mucks and their well-preserved but highly disrupted and damaged vertebrate and botanical remains are reinterpreted in part as blast deposits that resulted from several episodes of airbursts and ground/ice impacts within the northern hemisphere during Late Pleistocene time (~46–11 ka B.P.). Such a scenario might be explained by encounters with cometary debris in Earth-crossing orbits (Taurid Complex) that was generated by fragmentation of a large short-period comet within the inner Solar System.

During the time period leading up to the Last Glacial Maximum (~23–19 ka B.P.), when eustatic sea level was substantially lower, Alaska and the Yukon Territory were part of the largest circumarctic area to remain unglaciated, called Beringia (Fig. 1), which extended from eastern Siberia (Chukotka) across the exposed Bering Strait region into Alaska and western Canada^{1,2}. The glacial steppe environment of Beringia³ was a refugium for Plio-Pleistocene tundra-grassland plant communities⁴ as well as for the now-extinct mammalian megafauna⁵. Relict permafrost within the region^{6–9} has preserved an extraordinary frozen record of plant, pollen, insect, and vertebrate fossil remains, as well as their ancient DNA^{1,10,11}.

Early expeditions to Alaska^{12–14} and the Yukon Territory^{14,15} found large quantities of megafaunal bones along beaches, riverbanks, and in minor-stream valleys⁸. Even greater collections of these fossils were made after industrial-scale placer-gold mining operations began in the Fairbanks and Klondike districts in the early 20th century¹⁶. Otto W. Geist undertook extensive fossil collecting in Alaska on behalf of the American Museum of Natural History (AMNH), and in a typical year (1938) shipped more than eight thousand select specimens, weighing nearly eight tons (~7257 kg), to New York City⁸.

The fossil bones collected included those of bison, mammoth, horse, musk ox, moose, lynx, lion, camel, mastodon, bear, and caribou, with many of these animals also appearing as frozen partial carcasses or mummies^{1,8,17}. The three most common genera found were bison, mammoth, and horse, which represent more than 90% of Beringia's large mammalian biomass¹⁸. Many tens of thousands of specimens were collected in the 20th century from Alaska and the Yukon Territory^{5,8,19}, and hundreds to thousands more are still being recovered every year from mines in the Klondike district alone¹.

¹U.S. Geological Survey, Menlo Park, CA, 94025, USA. ²Lawrence Berkeley National Laboratory, Berkeley, CA, 94720, USA. ³Comet Research Group, Prescott, AZ, 86301, USA. ⁴Wyss Institute for Biologically Inspired Engineering, Harvard University, Cambridge, MA, 02138, USA. ⁵School of Earth Science and Environmental Sustainability, Northern Arizona University, Flagstaff, AZ, 86011, USA. Correspondence and requests for materials should be addressed to J.T.H. (email: jhag@usgs.gov)

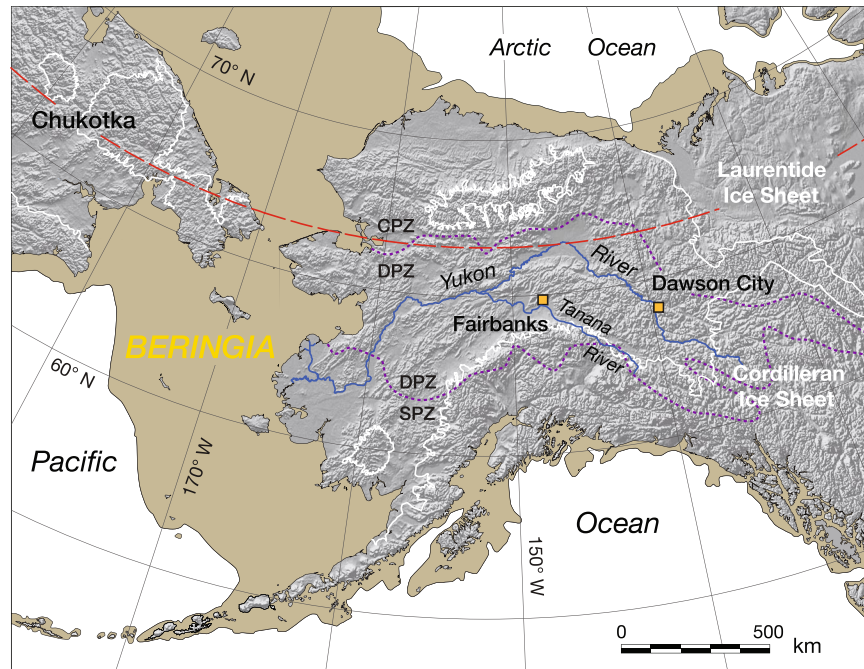


Figure 1. Map showing eastern Beringia during the Last Glacial Maximum (LGM; ~23–19 ka B.P.) when eustatic sea level was ~120 m below its present level¹. Megafauna fossils of this study were initially collected between 1940 and 1954 from mining operations near Fairbanks, Alaska, and more recently from the Klondike mining district near Dawson City in the Yukon Territory. Permafrost zones, discriminated by dashed purple curves, are continuous (CPZ, >90% frozen ground), discontinuous (DPZ, >50%), and sporadic (SPZ, <50%)³⁵. White curves outline areas of both continental and mountain glaciation with the latter having occurred in the Brooks Range of northern, and the Alaskan Range of southern, Alaska⁷⁰. Dashed red curve indicates the Arctic Circle. Chukotka is an autonomous district (Okrug) in easternmost Russia. The shaded-relief base map (SR_HR.tif) was acquired from Natural Earth (<http://www.naturalearthdata.com>) and modified as indicated above in Esri ArcGIS Desktop, v. 10.2 (<http://www.arcgis.com>).

Unfortunately, the stratigraphic context of most Beringian vertebrate fossils in museum collections is unknown because they were usually found already exhumed on beaches, riverbanks, or the floors of mining excavations^{7,8}. Radiocarbon dates^{19,20} and those fossils recovered with stratigraphic information, however, indicate that the megafaunal remains are predominantly from Wisconsinan-aged deposits^{8,9,21,22}. Furthermore, by the end of the Wisconsinan Glacial Stage (~85–11.7 ka B.P.) and Pleistocene Epoch (~2.58 Ma–11.7 ka B.P.) much of the mammalian megafauna of Eurasia and North America had become extinct. A number of causes for the Late Pleistocene extinctions have been proposed including intensive human hunting^{23,24}, climate change^{20,25}, and extraterrestrial impacts^{26–28}, and the subject remains highly controversial^{29,30}.

The demise of animals whose remains have been found in Beringian mucks has long been attributed to “natural deaths” in a “rigorous environment”⁸, and researchers have generally held to non-catastrophic or “uniformitarian concepts” in their interpretations of the causal events leading up to fossil preservation^{5,31}. Uniformitarian explanations can often appear inadequate, however, in providing a clear picture of how, for instance, animals found as frozen carcasses were quickly killed, often dismembered, and buried without normal predation, scavenging, or decomposition prior to freezing⁵.

Otto Geist held a more catastrophic view, based on his observations as collector, and envisioned a rapid series of events beginning with large volcanic eruptions and dust storms depositing widespread ash and silt beds that starved the animal grazers, followed by “great winds” that stripped trees of their leaves and bark before knocking them down, and finally by floodwaters that dismembered the many carcasses while washing them along with silt and plant debris into the creek valleys³². No evidence of large-scale starvation or floodwaters has been found, and no sources of “great winds” have been identified, so the scientific community has largely dismissed such catastrophic interpretations.

Herein we present the discovery of impact-related microspherules and elevated platinum concentrations in fine-grained sediments retained within seven Late Pleistocene bison and mammoth skull fragments from Alaska and the Yukon Territory, which potentially indicate a catastrophic origin for at least part of the frozen Beringian mucks. Our results point to repeated airbursts, including ground/ice impacts, and their associated blast winds³³ as major factors in the emplacement of Alaskan and Yukon mucks and their included megafaunal and botanical remains. In addition, we consider an astronomical scenario in which Late-Pleistocene episodes of terrestrial bombardment were caused by cyclic intersections with cometary debris during formation of the Taurid Complex³⁴.

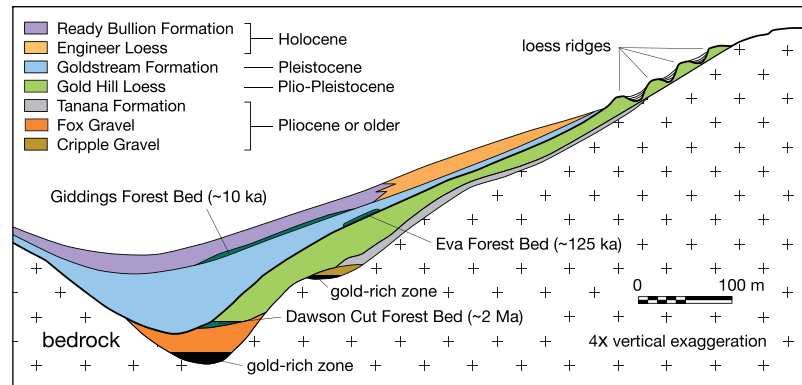


Figure 2. Schematic cross section of creek valley sediments near Fairbanks, Alaska²² showing stratigraphic relationships between primary loess (Gold Hill and Engineer Loess), retransported loess or “muck” (Goldstream and Ready Bullion Formations), forest beds (Dawson Cut, Eva, and Giddings), mass-wasting deposits (Tanana Formation), and gold-bearing gravel (Fox and Cripple Gravels; see Supplementary Information, “Quaternary stratigraphy”). Reproduced with permission of the Geological Society of America.

“Muck” deposits

“Muck” is a miner’s term used to indicate frozen, usually dark-coloured, fine-grained sediments (silt), often containing large amounts of plant material and abundant vertebrate fossils that unconformably overlie gold-bearing gravels in stream valleys of Alaska and the Yukon Territory^{6–9,16}. Mucks of the Fairbanks and Klondike districts are situated within the discontinuous permafrost zone (DPZ, >50% frozen ground; Fig. 1)³⁵ and because of their high organic content^{8,36} emit a fetid stench upon thawing^{6,9,37}. The silt portion of the mucks is generally inferred to be retransported (gravitationally emplaced) loess from nearby upland areas that was initially swept up by winds from glacial outwash plains and deposited across the landscape, primarily during periods of glacial expansion^{8,38}. These loess beds have total thicknesses ranging from a few cm on ridges to >60 m at lower elevations^{8,39} and are generally referred to as “primary”, “upland”, or “air-fall” loess^{40,41} as opposed to the “muck”, “organic silts”, or “valley” and “retransported” loess of the valley bottoms^{9,42}. Nearby volcanic centers of the Aleutians and Alaskan margin produced distal tephra beds intercalated within the mucks and primary silts, and these tephras have played an important role in determining the age and stratigraphic framework of these deposits⁴³.

Vertebrate and plant remains

The fossil skull fragments assembled for this study are Wisconsinan in age (Table S1), so we will focus on information concerning emplacement of the corresponding Goldstream Formation (Fig. 2; see Supplementary Information, “Quaternary stratigraphy”), the equivalent King Solomon Formation (Silt unit) of the Klondike district, and their incorporated vertebrate and plant remains. Similar organic-rich loess deposits also occur in Siberia (Fig. 1) and are called “Yedoma”. Overall, the fossil bones recovered from these units show a spectrum of preservation ranging from highly weathered to exceptionally well preserved with intact ancient DNA^{1,7,10}. The recovered mummified or “freeze-dried” partial carcasses also indicate that some part of the permafrost in the Fairbanks and Klondike areas has existed there since Wisconsinan time^{6–9}. Moreover, soil horizons were often buried and frozen before the plant material could decompose, in some instances preserving it for >700 kyr^{9,35}.

The remarkable preservation of vertebrate and plant remains within the mucks, however, is in stark contrast to the physical disruption and damage affecting much of this material. Much of the skeletal remains from Alaska and Yukon were disarticulated and broken prior to freezing (Fig. 3a), and the rare preserved carcasses were often mangled and torn apart^{5,7,8}. Such dismemberment has been attributed to predators and scavengers, but these explanations raise questions including why the carcasses’ remaining fat and flesh had not been consumed⁵. In addition, the fine-grained character of the mucks differs markedly from that of the more massive logs, megafaunal bones and tusks enclosed within it. Although the valley-bottom mucks are thought to have accumulated from gradual downslope movement of primary upland loess by slopewash, creep, and mudflow^{8,42}, this scenario appears inconsistent with the required rapid burial and freezing of well-preserved carcasses^{7,8} and plant remains^{9,35}. Below we examine these and other paradoxes more closely, some of which amazed and bewildered early explorers, scientists, and miners venturing to the region.

Fossil bone abundance. “Fossil bones are astonishingly abundant in the frozen ground of Alaska⁷, and most observers from Quackenbush¹⁴ to Péwé *et al.*²² have made similar remarks. The majority of Alaskan fossils have been found in creek valley bottoms⁸, but the fossils have not been abraded or waterworn⁷. Bones are generally found throughout a given valley, and have been recovered from almost all creek valleys that have been mined⁷ (Fig. 3a). According to Otto Geist, most of the Pleistocene bones from the Fairbanks district were found in black muck containing plant remains¹⁶.

In the Klondike district, bones are mostly found near the base of the King Solomon Formation, usually within a few decimeters of its contact with the underlying auriferous gravel beds⁹. At one Alaskan locality, Little Eldorado Creek, 48 bison skulls and other related skeletal remains were found within a 35-m² area³², while at other localities bones from a mixture of species have been recovered^{7,8,18}. Although fossil remains are more abundant at some

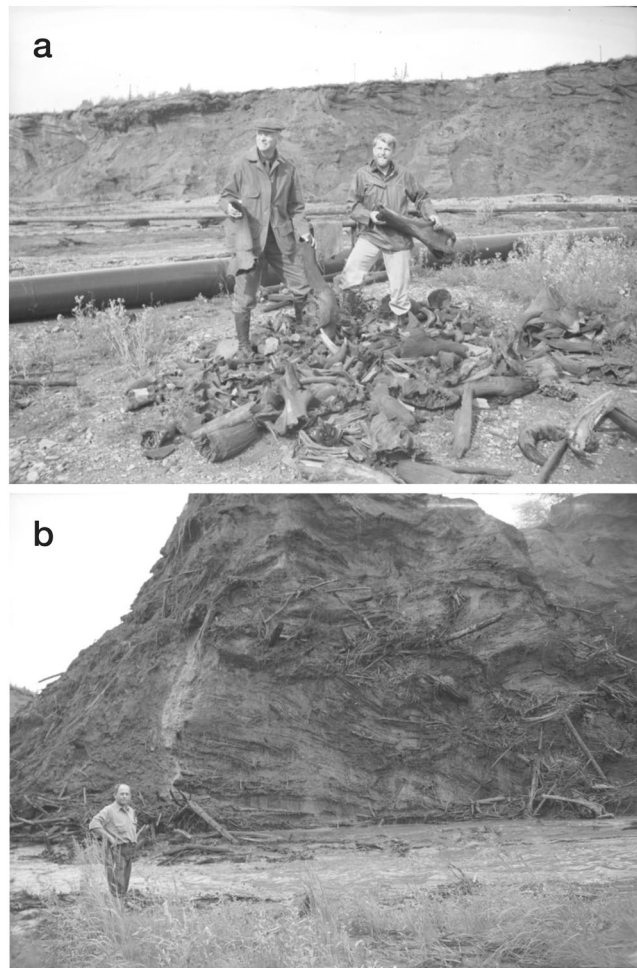


Figure 3. Photographs taken in 1941 at the Cripple Creek mine located just west of Fairbanks, Alaska. **(a)** Frank C. Hibben on August 3, at right, holding a broken mammoth's humerus (*Mammuthus primigenius*) and an unidentified person holding bison skull fragments (*Bison priscus*) at one of Otto Geist's fossil discard piles (see Supplementary Information, "Historical note"). Maxwell catalog no.: Hibben_Ak41_neg15bw. **(b)** Otto Geist on August 4 standing next to a runoff stream from hydraulic jets (monitors) used to thaw and wash away the muck overburden (background), and expose the gold-bearing gravels (see Fig. 2). Note the logs, branches, and other plant material protruding from the fined-grained frozen mucks. Maxwell catalog no.: Hibben_Ak41_neg16bw. Both photographs are from the Frank C. Hibben Photograph Collection, courtesy of the Maxwell Museum of Anthropology, University of New Mexico.

localities than others, many individual bones, or skeletal and carcass fragments, have been found in complete isolation^{8,44}.

Fossil bone dispersal and breakage. "The dispersal of the bones is as striking as their abundance"⁷ and articulated bones are scarce in Beringia with the exception of small rodent carcasses (e.g., ground squirrels, pikas, mice) found underground within their nests and burrows^{5,8}. Moreover, not only are individual megafaunal bones found separately, or mixed together in concentrated "bone beds", they also are often broken (Figs 3a and 4–7, S1–S4). In examining large collections of Pleistocene fossil bones at the AMNH in New York and a Yukon Government warehouse in Whitehorse, we noted that the majority had been broken, including the largest (femora and humeri), with some still containing relict marrow, supporting the lack of predation. Because the mucks have apparently remained frozen since Wisconsinian time, dispersal and breakage of bones must have occurred prior to freezing and was not a general byproduct of the mining operations.

MacPhee *et al.*⁴⁴ attempted to explain the dismemberment of Pleistocene carcasses and the resultant dispersal and breakage of bones recovered from Yedoma deposits on Russia's Taimyr Peninsula as being caused by movements of ice in valley bottoms during spring breakup. They suggested that exposed limbs or other body parts of partially buried carcasses could have been sheared off by moving ice, and that ice-caused push fractures could have produced forces great enough to break bones as large as mammoth femora and humeri (see Fig. 3a). They acknowledged, however, that the "exquisite condition" of carcasses and many bones argues against these remains having spent a significant amount of time at the surface or having undergone any manner of "repeated redeposition"⁴⁴.

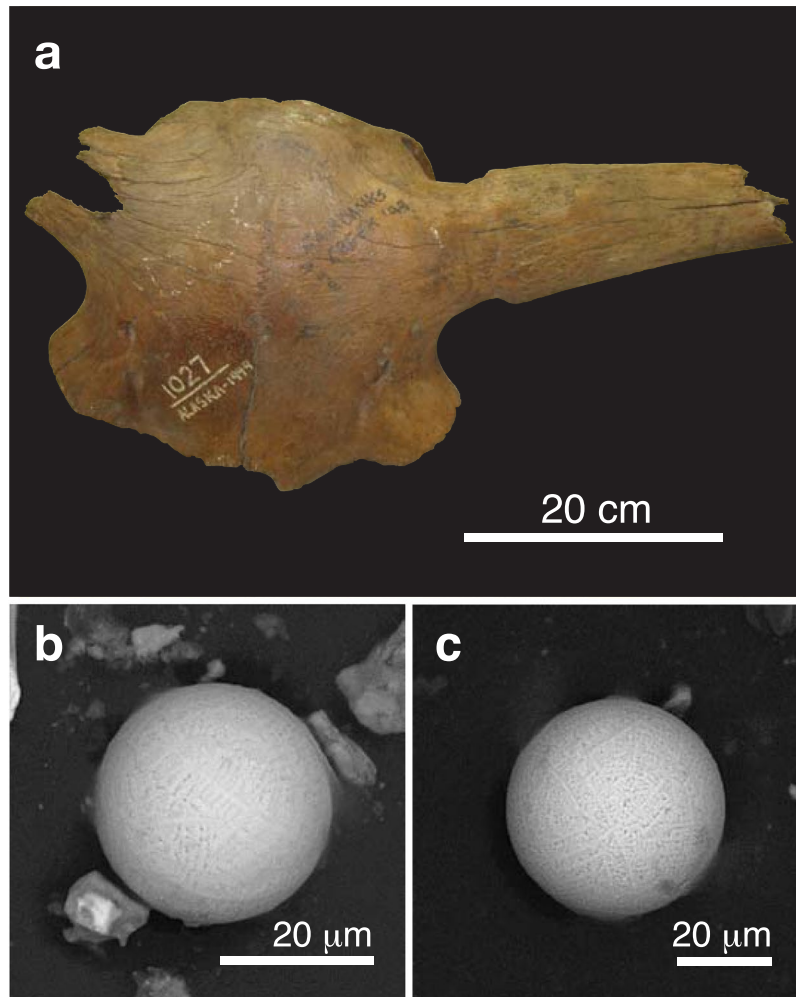


Figure 4. (a) Photograph of Alaskan bison skull A-501-1027 (*Bison priscus*) from the AMNH collection recovered at Fairbanks Creek in 1949. The skull has been dated at $18,635 \pm 105$ CAL yr B.P. (Table S1). (b,c) SEM images of two microspherules magnetically separated from fine-grained sediment contained within the skull.

Muck sedimentology. A distinctive characteristic of the Beringian mucks is their uniform fine-grain size with only a few thin layers and lenses of coarser sand and gravel near their lower contacts¹⁶. Most mineral particles of the mucks will pass through a 200-mesh ($<74 \mu\text{m}$) sieve⁶, and, as mentioned above, the ultimate origin of these deposits is considered aeolian^{7,9,22}. The Wisconsinian Goldstream mucks are poorly- to well-stratified, and the layers are conformable to the valley slopes and bottoms^{16,42}. In the Silt unit of the Klondike district, planar bedding is the most common structure, as at Quartz Creek where a 17 m-thick section contains individual beds up to 5 cm thick. The silt can also be massive (≤ 3 m thick) with no apparent sedimentary structures⁹.

The sedimentary contrast of dispersed bone clasts (e.g., megafaunal skulls, tusks), isolated rock fragments ~ 2 –10 cm in diameter¹⁶, and logs (Fig. 3b), within a silty matrix, however, is incompatible with a fluvial origin. A complete mammoth skull including tusks can weigh 100–150 kg or more, and a large male woolly mammoth tusk can weigh up to 80 kg⁴⁴. Large volumes of water moving at high velocity would be needed to move such objects any distance, for which there is no water-related sedimentological evidence, indicating that the partial frozen carcasses have not been transported any distance by fluvial processes. Dense vegetal cover and low rainfall levels in Alaska have kept slope wash to a minimum⁷, and downslope movements of skeletal remains by creep and solifluction would be limited to the depth of seasonal thawing^{6,7}, which is presently <1 –2 m in the Fairbanks area⁵.

Partial frozen carcasses. One of the most remarkable and perplexing aspects of the mucks is their preservation of frozen animal carcasses or mummies. The vast majority of megafaunal mummies in Beringia were found as partial carcasses, and the most commonly found body parts in Alaska have been isolated limbs of horses, bison, moose, and caribou⁵. Even the most complete mummies show signs of significant internal damage: the Siberian Berezovka mammoth had a number of broken bones (e.g., pelvis, ribs, foreleg, shoulder blade) and evidence of significant internal bleeding^{5,45}. Notably, the well-preserved tip of a Steppe Bison's tail (~ 22 cm long) was found under the sole of the mammoth's right forefoot⁴⁵. The headless Selerikan pony (Siberian) also had broken humeri and ribs, and the Steppe bison "Blue Babe" (Alaskan) had missing and broken bones including a shattered right tibia and broken right mandible⁵.

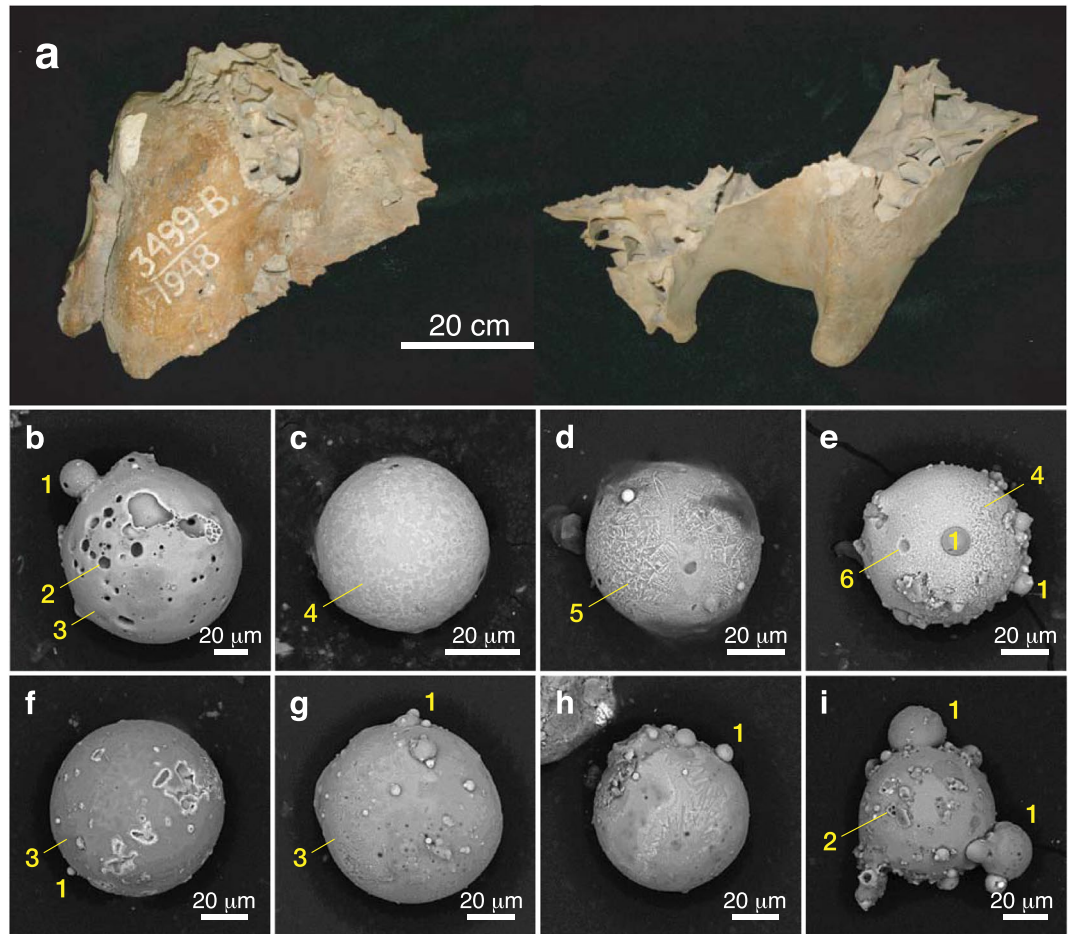


Figure 5. (a) Photograph of Alaskan mammoth skull fragments (A-478-3499; *Mammuthus primigenius*) at the AMNH collected in the Fairbanks mining district in 1948. The skull has been dated at $48,200 \pm 2750$ CAL yr B.P. (Table S1). (b–i) SEM images of microspherules recovered from fine-grained “muck” sediment encased within the skull fragments. Yellow numbers indicate (1) accretionary spherules, (2) vesicles, (3) smooth microstructures, (4) textured microstructure, (5) dendritic microstructure, and (6) possible microcrater.

The nearly undamaged baby mammoth “Lyuba” from Siberia, found in 2007, also had a broken mandible⁴⁶, whereas the baby mammoth “Dima”, found in 1977, showed a small wound on its right wrist and hemorrhaging of its heart muscle⁵. In both Dima and Lyuba, fine-grained mineral particles were found within their trachea, bronchi, and/or lung alveoli^{5,46}. Only hide from the head, neck, and trunk, along with the attached left front leg of an Alaskan baby mammoth, “Effie”, were found at Fairbanks Creek in 1948^{5,8}. Previously, in 1941, a leg from a different mammoth with bone, hide, and hair had been found near the Effie discovery site¹⁶. Full gastrointestinal tracts (e.g., Selerikan pony) and food material between their teeth (e.g., Berezovka mammoth) indicate that death for many of these mummies was “almost instantaneous”⁵. Furthermore, from their thick fat deposits and recovered gut contents, it appears that many of the animals died at roughly the same times of year during the late summer or autumn seasons⁵. Notably, megafaunal deaths were not concentrated during the lean months of winter when they would have been subject to harsher environmental conditions⁸.

Plant material. The Goldstream Formation contains abundant layers, lenses, and clumps of plant material derived from grasses, mosses, alder, spruce, willow, cottonwood, and birch that match the present-day flora^{6,8}. Pollen analyses indicate that trees during the Wisconsin glacial period were scarce in the region and that the tree line was ~600 m lower, although forested areas likely prevailed at lower elevations within the creek bottoms⁸. Peaty layers are common in the Goldstream muck, ranging from <0.01 to >3 m in thickness^{7,8}, and in many places contain tree stumps rooted in place with the trunks and treetops having been “broken off and carried away”^{7,16}. Multiple forest layers (e.g., 6 horizons within a 6-m section⁶) are more common within the overlying Holocene Ready Bullion Formation⁸ (Fig. 2).

Severely splintered tree stumps and logs are often found in the Goldstream mucks, and the splintering has been attributed to freezing⁷, although many frozen stumps and logs, mostly lacking their bark, are well preserved⁸. Other buried wood includes sticks and branches ~2–13 cm in diameter (Fig. 3b)^{8,16}. Some of the finely comminuted plant material found throughout most of the Goldstream muck is carbonized, with the total carbon content of this material being 2.39%¹⁶. Comminution of this plant material was thought to have resulted from a combination of forest fires, frost action, and downslope transport¹⁶.

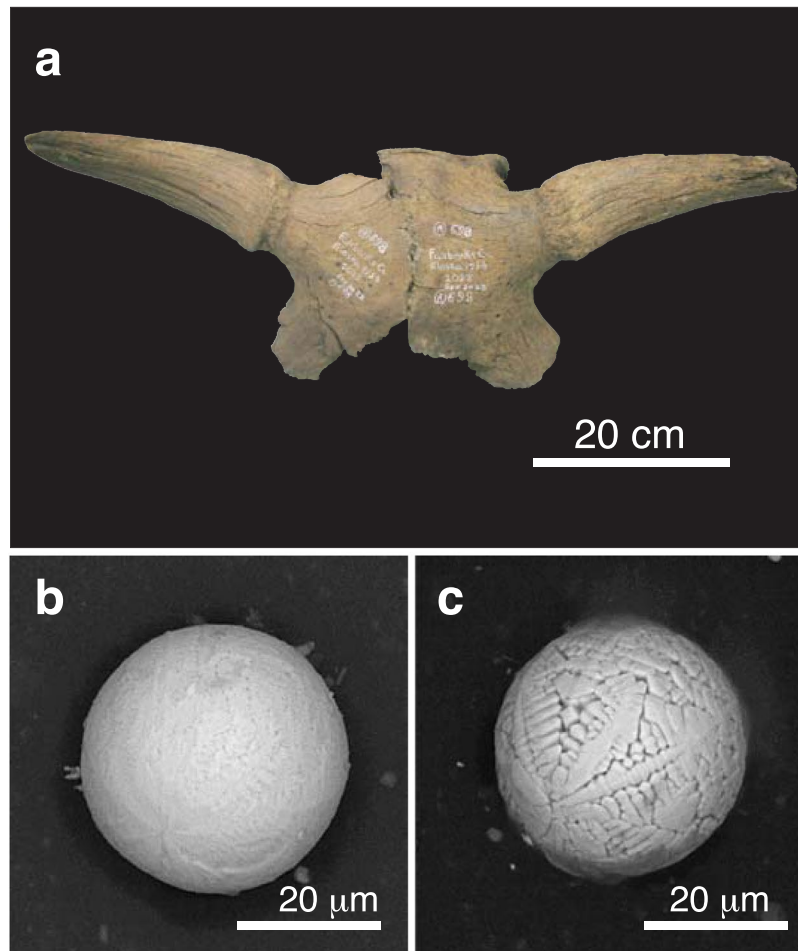


Figure 6. (a) Photograph of Alaskan bison skull (A-698-2022/2023; *Bison priscus*) from the AMNH collection recovered at Fairbanks Creek in 1954. The skull is undated. (b,c) SEM images of two microspherules magnetically separated from fine-grained sediment contained within the skull.

Results

The accelerator mass spectrometer (AMS) radiocarbon dates for the Beringian megafaunal skull fragments range between ~48 and 18 ka B.P. (Table S1) and are similar to those commonly determined for megafaunal bones and carcasses recovered from Alaskan and Yukon mucks^{20,25,47} and Siberian Yedoma deposits^{5,25,47}. The youngest age ($18,635 \pm 65$ yr B.P.) is for an AMNH bison skull with a shellacked exterior (Fig. 4a). The shellacked top of the core drilled from this skull was removed before processing, but contamination of the remaining bone sample remains a possibility. The mammoth skull had also been shellacked, but its dating sample was collected from bone structures within the skull (Fig. 5a).

Magnetic fractions extracted from aliquots of bulk sediment removed from each skull ranged in size from ~5–44 g/kg, averaging 23.6 g/kg (Table S1). Upon examining each fraction for microspherules, two fractions were found to contain only rounded detrital magnetite grains (Y-404.716, Y-109-8; Fig. S4), whereas the other seven contained numerous microspherules ranging in abundance from ~1000–18,000/kg, with an average of ~8000/kg. For comparison, concentrations of magnetic spherules (~10 μm–5.5 mm in diameter) from samples of the Younger Dryas boundary layer collected at 18 sites in the northern hemisphere range from 5–4900 spherules/kg with an average of 940/kg³⁰. Only one rounded quasi-spherical particle was found within the magnetic separate from primary loess sample AK-915. It was lost before it could be identified, but if similar to the other recovered microspherules it was present at a much lower abundance (~17/kg) by several orders of magnitude (Table S1).

Scanning electron microscopy (SEM) images (see Supplementary Information, “Analytical methods”) for some of the 49 muck microspherules selected in our study are shown in Figs 4–7, S1–S3. Their shapes and surface textures are similar to those of microspherules associated with the Chixulub impact at ~66 Ma⁴⁸, the Chesapeake Bay impact at ~35 Ma⁴⁹, the Meteor Crater impact at ~50 ka B.P., the Younger Dryas boundary layer at ~13 ka B.P., the Tunguska airburst in 1908, and the Trinity atomic airburst in 1945^{30,50}. In particular, microspherules from the mammoth skull (Fig. 5b,e,g–i) show accretionary features, which form within the impact plume when partially molten and still tacky projectiles collide at low differential velocities. At higher initial velocities destructive collisions often occur resulting in particles displaying microcraters (Fig. 5e) and/or brittle fracturing³⁰.

Energy dispersive X-ray spectroscopy (EDS) analyses (see Supplementary Information, “Analytical methods”) of the 49 microspherules indicate two distinct chemical populations: those from the mammoth skull (Fig. 5) are

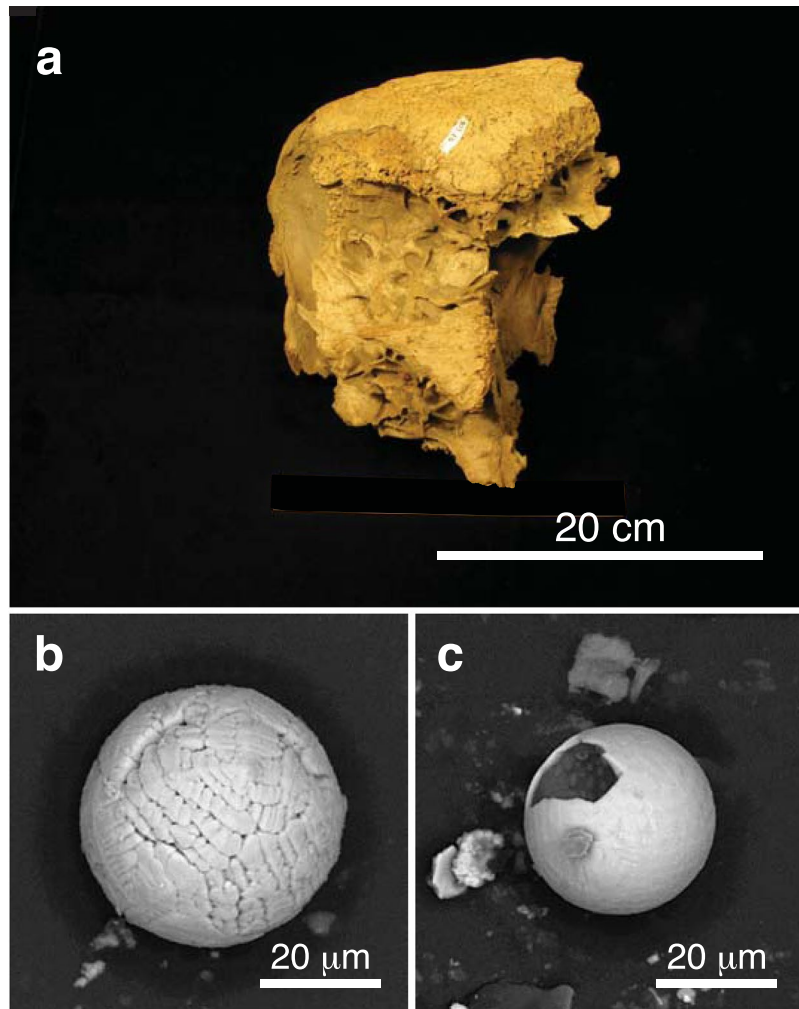


Figure 7. (a) Photograph of Yukon bison skull (Y-301.16; *Bison priscus*) from the Territorial Government collection in Whitehorse recovered at Homestake Gulch in the Klondike district. The skull has been dated at $29,065 \pm 105$ CAL yr B.P. (Table S1). (b,c) SEM images of two microsphherules magnetically separated from fine-grained sediment contained within the skull.

predominately aluminosilicate ($\text{Al}_2\text{O}_3 = 30.7$ wt.%, $\text{SiO}_2 = 34.4$ wt.%, $\text{FeO} = 23.4$ wt.%, $\text{CaO} = 2.9$ wt.%, with all other oxides being <2.3 wt.%), whereas those from the remaining six bison skulls (Figs 4, 6–7, S1–S3) are typically iron-rich ($\text{FeO} = 87.4$ wt.%, $\text{Al}_2\text{O}_3 = 2.0$ wt.%, $\text{SiO}_2 = 2.3$ wt.%, $\text{CaO} = 4.0$ wt.%, with all other oxides being <1.1 wt.%). Various oxides of the 49 microsphherules are plotted on ternary diagrams along with those for known populations of other types of sphherules. In Fig. 8a, abundances of Mg, total Fe, and Al for the 49 microsphherules are compared with >700 cosmic sphherules (melted micrometeorites) and micrometeorite particles from 83 sites, mostly in Antarctica and Greenland. The cosmic material tends to be significantly more enriched in MgO and depleted in Al_2O_3 relative to the muck microsphherules. In Fig. 8b, compositions of the 49 microsphherules are compared to 267 fly-ash particles and anthropogenic sphherules collected at 48 sites around the world that were produced primarily by coal-fired power plants³⁰. In this case, the fly ash is enriched in Al_2O_3 and far more depleted in P_2O_5 relative to the muck microsphherules. The potential for anthropogenic contamination, however, is extremely low because it is usually restricted to near-surface deposits of industrial age (<300 yr), whereas the Beringian fossils had remained deeply buried and frozen for thousands of years.

A comparison of the muck microsphherules with $>10,000$ volcanic samples (glass, tephra, and sphherules) from 205 sites of global extent is shown in Fig. 8c. Volcanic material tends to be enriched in silica (>40 wt.%) and depleted in Fe abundances compared to the 49 microsphherules. Moreover, the sediment removed from the skull fragments lacked any typical indicators of volcanic activity such as volcanic ash and/or tephra. Finally, compositions of >1000 impact-related markers (sphherules, ejecta, and tektites) from 12 craters and tektite-strewn fields³⁰ were compared to compositions of the muck microsphherules (Fig. 8d). In addition, compositions of typical metamorphic rocks (P, pelitic; Q, quartzofeldspathic; C, calcareous; and B, basic) are indicated on the ternary diagram. The 49 microsphherules are most similar to pelitic rocks that are chemically equivalent to clayey mudstones and shales with several having more calcareous compositions. Biasing of the microsphherules toward more Fe-rich compositions (A and F), however, was caused by their magnetic separation from the bulk sediments. In summary,

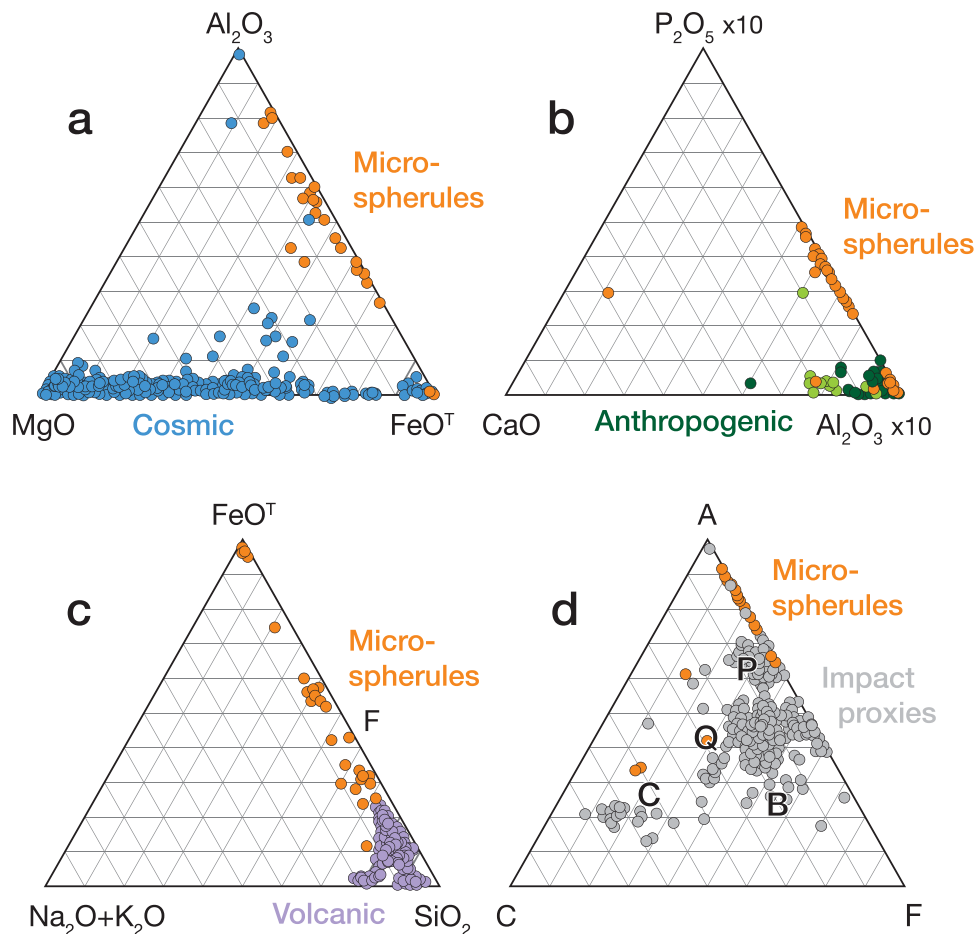


Figure 8. Ternary diagrams (molar values of oxides) comparing 49 representative Beringian microspherules (orange dots) to (a) cosmic material (blue dots; $N > 700$); (b) anthropogenic fly ash (light green dots; $N = 225$) and other anthropogenic spherules (dark green dots; $N = 42$); and (c) volcanic materials (purple dots; $N > 10,000$). (d) Standard ACF (Al_2O_3 -CaO-FeO) ternary diagram comparing the microspherules to cosmic impact materials, including spherules and tektites from twelve accepted impact craters and strewnfields, including the Australasian tektite field (~ 780 ka) and the Cretaceous-Paleogene impact layer (~ 66 Ma) ($N > 1000$). The microspherules are heterogeneous as indicated by the letters representing specific metamorphic rock types: P, pelitic, e.g., clayey mudstones and shales; Q, quartzo-feldspathic, e.g., gneiss and schist; B, basic, e.g., amphibolite; and C, calcareous, e.g., calcite ($N = 43$). Formulas for diagram: $A = (\text{Al}_2\text{O}_3 + \text{Fe}_2\text{O}_3) - (\text{Na}_2\text{O} + \text{K}_2\text{O})$; $C = (\text{CaO} - (3.33 \times \text{P}_2\text{O}_5))$; $F = (\text{FeO} + \text{MgO} + \text{MnO})$.

approximately 75–90% of the muck microspherules are dissimilar to known cosmic, anthropogenic, and volcanic spherules and related materials, and are most similar to known impact-related spherules and classes of terrestrial sediments.

Average crustal abundances are 0.51 ppb for platinum (Pt) and 0.52 ppb for palladium (Pd), based on sediment and loess data⁵¹, and average values for our primary loess samples are 1.02 ppb for Pt and 1.67 ppb for Pd, with a lower detection limit of 0.1 ppb (Table S2). For muck samples from three of the four bison skulls analysed, Pt abundances are elevated and range from ~ 2 –4 ppb; for skull Y-404-716, in which no microspherules were found (Table S1), the sediment's Pt content (0.90 ppb) is similar to that of the primary loess (1.02 ppb). Pd values remain relatively constant between the muck and loess samples, averaging 1.31 ppb, and the Pt/Pd ratios are thus higher for the Pt-rich muck samples. High Pt/Pd ratios suggest an influx of impact-related, Pt-enriched material from an impactor and/or from Pt-rich target rocks, possibly included within the microspherules. As an example, Andronikov *et al.*⁵² found high Pt abundances (18–460 ppb) in four of six microspherules collected from the Younger Dryas Boundary layer at Blackwater Draw, NM.

Discussion

The high-temperature, melt-quenched and accretionary microspherules, and Pt enrichments associated with sediments from the megafaunal fossils of this study (Figs 4–7, S1–S3), are well-established indicators of extraterrestrial impact events^{30,50,53}. In light of this evidence, much of the death, dismemberment, burial, and preservation of megafaunal bones and partial carcasses within the frozen Beringian mucks is perhaps better explained by the catastrophic effects of cosmic impacts rather than by more commonplace causes of mortality such as illness,

accident, advanced age and/or predation. In the following discussion, we reinterpret parts of the mucks and their contents as blast deposits and attempt to resolve the apparent paradoxes and inconsistencies outlined above. Examples to be applied come from studies of blast effects associated with the ~50 ka B.P. Meteor Crater impact³³, 1908 Tunguska airburst⁵⁴, ≥1945 nuclear tests⁵⁵, and 1980 Mount St. Helens eruption⁵⁶.

The blast or shock waves associated with ground impacts or airbursts cause an almost instantaneous rise in air pressure to peak overpressures as the wave fronts expand at supersonic velocities. The subsequent mass movement of air generates blast winds, which travel more slowly than the blast waves but can be just as damaging, if not more so^{33,57}. In general terms, the area (A) damaged by an explosion is proportional to the cube root of its yield (E) squared³³, or $A \propto E^{2/3}$. The amount of damage is also a function of the explosion's height, and for a given yield there is an optimum blast height at which the damage is maximized. For the 1908 Tunguska airburst, the blast height was ~6–9 km⁵⁸, near the optimum height for a ~10–20 megaton (MT) blast, and trees of the Siberian taiga were knocked down³³ over an area of ~2150 km². Intense thermal radiation was also associated with the Tunguska event. Within a radius of ~10–15 km from the epicenter the sides of trees facing the atmospheric impact were scorched, and ignited treetops were reported to have burned in many places for up to 24 hr⁵⁴.

Kring³³ quantified the air blast for the Meteor Crater impact using scaling relationships derived from nuclear bomb tests. Given an estimated explosive yield of ~20–40 MT for the impact of an ~50-m-diameter iron asteroid⁵⁹, the air blast would have flattened trees within a ~16–22 km radius of ground zero, and damaged them over an area of ~4100–8500 km². Within a radius of ~3–5 km, the ephemeral blast wind (>1000 km/hr) would likely have “scoured the surface of loose debris, plants, animals, and soil”, and, although decreasing in intensity with distance, would have remained “fairly large” up to distances of ~20–40 km³³. Both types of impact events would have killed megafauna from various levels of blast injuries.

Primary blast injuries are caused by the nearly instantaneous change in environmental pressure from passage of the blast wave. In large mammals, the organs most commonly affected are the lungs, ears, bowel, and central nervous and cardiovascular systems⁵⁷. The blast wave can also fracture bones and cause dismemberment including traumatic amputations and decapitations. From the exposure of a wide range of animals to nuclear tests (e.g., steers, burros, sheep, goats, monkeys, pigs, dogs, cats, rabbits, chickens, rats, hamsters, and mice), it was determined that larger animals generally endure higher overpressures better than smaller ones, and that animals affected by primary blast injuries usually die within a few minutes⁵⁵.

Secondary blast injuries are associated with the subsequent blast wind and result from projectiles that have been picked up and energized by it. Sufficiently large fragments can also cause direct limb amputations and decapitations. Tertiary blast injuries result when victims are hurled against the ground or fixed objects. Often, victims tumble along the ground sustaining multiple injuries. Miscellaneous blast injuries include inhalation of dust, and burns from the explosion itself or from fires ignited by it⁵⁷.

A modern example of a catastrophic explosion causing death and dismemberment of large mammals was the 1980 eruption of Mount St. Helens. An equivalent explosive yield for the eruption is estimated to have been ~35 MT, and the “blast zone” of downed trees and destroyed habitat⁵⁶ covered an area >350 km². Animals within the blast zone died from suffocation, severe blast injuries, and falling timber and/or pumice blocks⁶⁰. Of the 24 sites where remains of elk (*Cervus elaphus*) and black-tailed deer (*Odocoileus hemionus*) were found, 5 were examined ~1 year later by Lyman⁵⁶. All 5 sites were located ~15 km away from the Mount St. Helens vent, and at this distance mature trees had been snapped off and splintered near their base and completely stripped of their branches. The volcanic crater could not be seen from two of the sites, where intervening ridges probably acted as deflectors, but the crater was visible at the other three sites where they would have been subjected to the full force of the blast⁵⁶.

Portions of cervid skeletons were found buried under ~20–60 cm of volcanic ash and no soft tissue was preserved. Long bones at the sheltered sites were not broken, but those at the exposed sites were fractured, in some cases shattered, and were generally more disarticulated and widely scattered. Bone fracturing was nonselective as unbroken examples of all skeletal elements could be found. Apparently the elk and deer at the exposed sites were engulfed in the eruption's ash cloud, hurled along with trees, rock fragments and pumice blocks, and deposited some distance away at their recovery locations. Carnivore damage to the bones was minimal because many of the bones were buried, and scavengers within the blast zone would have been killed as well⁵⁶.

The blast injuries sustained by cervids at Mount St. Helens apparently match much of the damage exhibited by the vertebrate remains found within Beringian muck and Yedoma deposits. Broken and shattered bones, especially within the frozen mummies (e.g., Berezovka mammoth, Lyuba, Blue Babe), have been attributed to retransportation and diagenetic processes^{5,46}. Pfizenmayer⁴⁵, however, noted that bleeding had occurred at the break of the Berezovka mammoth's right foreleg, and inferred it had still been alive at the time. The mammoth, therefore, was initially thought to have fallen into a “crevasse”⁴⁵, but instead could have been thrown and/or tumbled across the ground by blast winds, come to rest in a surface depression or pit, and been covered over by blast-mobilized sediment. The segment of a bison's tail found under the Berezovka mammoth's foot could simply have been clipped off a nearby grazer by the blast and deposited along with the mammoth's carcass. That a healthy bull mammoth was instantly killed while grazing, subjected to multiple broken bones and internal injuries, and rapidly buried along with a body part from another animal, is consistent with the effects of a large explosive event.

The smallest frozen mummies preserved in underground nests and burrows (e.g., ground squirrels, pikas, mice) could have been killed because of their higher susceptibility to blast overpressures. At the surface, baby mammoths (e.g., Dima, Lyuba), with smaller cross sections, would have sustained less blast damage than adults. The baby mammoth Effie, however, could have been blown apart in closer proximity to an explosive center. The disarticulated and scattered bones along with partial carcasses and the relatively abundant mummified limbs are likely indicative of the damaging effects of airbursts and/or ground impacts. The overall abundance of Beringian fossil bones, often including those of different species within a single bed, do not conform with normal modes and rates of attrition, but are in accord with the expected aftermaths of cosmic impact events.

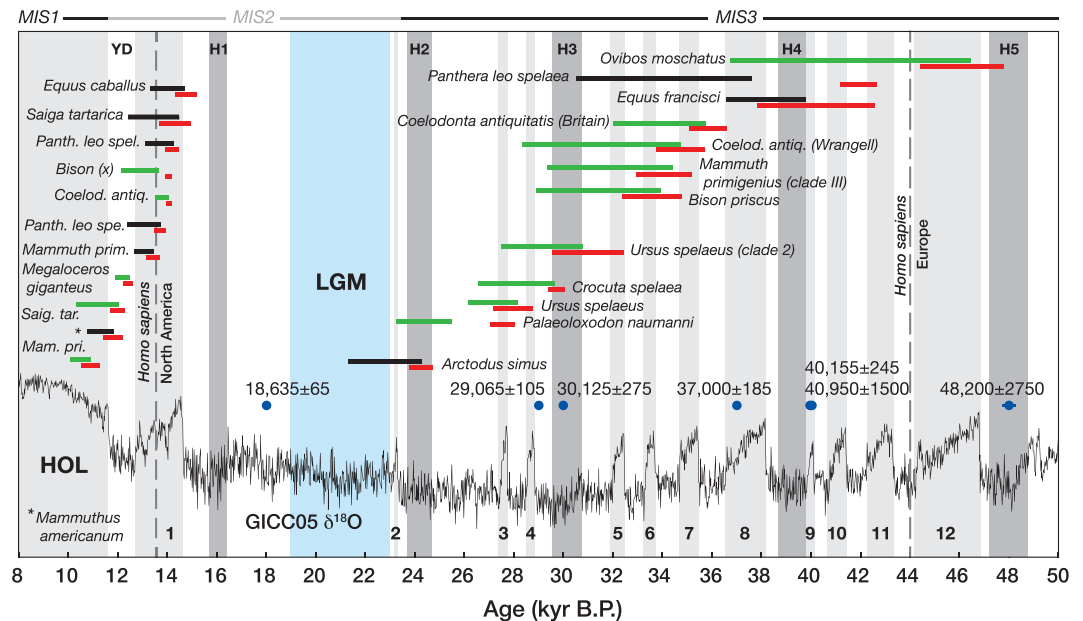


Figure 9. Megafaunal regional or global extinction-event age ranges, as identified by Cooper *et al.*²⁵ in Late Pleistocene Eurasian and North American ancient DNA and paleontological data sets, plotted along with climate intervals determined from the GICC05 $\delta^{18}\text{O}$ ice-core record (black curve) from Greenland^{71,72}. Red bars, with taxonomic names, indicate the youngest AMS ^{14}C dates for the events (± 2 SD), and green (Eurasia) and black (North America) bars indicate GRIWM-based estimates of last-occurrence temporal ranges (95% confidence intervals); the Gaussian-resampled, inverse-weighted McInerney (GRIWM) method incorporates sampling density and dating errors in order to estimate the most plausible temporal ranges²⁵. Light gray boxes (1–12) indicate Dansgaard-Oeschger (D-O) interstadial warming events⁷³, and darker gray boxes indicate Heinrich cold events (H1–H5)⁷⁴. Blue dots and values represent the AMS ^{14}C dates for the skull fragments of this study (Table S1), the light blue area delimits the Last Glacial Maximum (LGM), HOL abbreviates the Holocene Epoch, YD denotes the Younger Dryas stadial, and ranges for Marine Isotope Stages (MIS) 1–3 are shown atop the plot. Reproduced with permission of the American Association for the Advancement of Science.

The mixture of vertebrate remains, plant debris, and loess within the Beringian mucks is consistent with ground-surface scouring, transport, and the chaotic redeposition of these materials in creek valleys by blast winds (Fig. 3b). Trees exposed to such winds would have been stripped of their branches, leaves, and bark, and either knocked down or broken off and splintered, like those found in the muck deposits. The finely comminuted plant material distributed throughout the mucks might have resulted from pulverization of less durable plant debris (leaves, grasses, bark, etc.) within turbulent blast winds, and its carbonization could have been initially caused by scorching and/or burning from intense thermal radiation associated with atmospheric passage of hypervelocity impactors. Stacked layers of killed forests indicate that creek-valley silt accumulation was not gradual or uniform, but that it was deposited cyclically in large amounts over short intervals of time. In addition, less severely injured animals could have suffocated in the dense clouds of airborne silt (e.g., Dima, Lyuba).

The buried forest layers, range of radiocarbon dates, and microspherules associated with the vertebrate fossils indicate that deposition of the Alaskan and Yukon mucks would have required more than one impact event between ~48 and 18 ka B.P. (Fig. 9; Table S1). A possible mechanism for repetitive impacts on Earth is the cyclical intersection of its orbit with meteoroid streams containing numerous objects large enough (~10–100 m) to generate Tunguska-class airbursts and ground impacts. Since the late 1970s, a group of British astronomers^{34,61,62} has calculated that such a scenario likely affected Earth throughout Late Pleistocene time during formation of the Taurid Complex.

The massive Taurid Complex is known to consist of several dynamically related meteoroid streams, several Apollo-type asteroids, and Comet 2 P/Encke, which has a ~5-km diameter and orbital period of 3.3 yr^{61,63}. These objects are most likely the remnant debris of a large comet (~50–100 km) from the trans-Neptunian region that was injected into a short-period, sub-Jovian, low-inclination Earth-crossing orbit^{63,64} by gravitational fields of the outer planets. Such injections of large comets into the inner solar system possibly occur at a mean rate of roughly once per 30 to 100 kyr⁶⁴.

Spontaneous splitting is a major factor in comet disintegration and may occur anywhere along its orbit, with some preference for near-perihelion breakup, and would lead to hierarchical fragmentation of the progenitor comet into numerous ~1 km-sized bodies in short-period orbits, many smaller objects in the ~10–100 m range, and large quantities of dust^{34,64}. Substreams of meteoroids having similar but separate orbits within the complex are evidence of this cascading mode of fragmentation, which would likely have occurred over a period of ~10–100 kyr^{63,64}. Using the observed dispersion of material in the Taurid Complex, Steel and Asher⁶² have calculated an overall age of at least 20–30 kyr, similar to the older age limit of megafaunal fossils containing impact-related

microspherules. The continued dispersal of Taurid material by collisions, and by gravitational and radiative effects, has created a broad sporadic stream surrounding the complex⁶⁵.

Jupiter's gravity would predominantly cause the Taurid-object orbits to precess, and dynamical calculations have shown that Earth would encounter these orbits at ~3000 yr intervals^{34,64}. Over the ~30-kyr period spanned by the skull-fragment ages (Table S1), it is expected that one or more encounters might have individually generated the atmospheric impact of hundreds to thousands of Tunguska-sized objects on a hemispheric scale. Such bombardment episodes could have lasted for several hours and occurred at certain times of the year, every few years, over a period of one to two centuries^{34,64,65}.

The Late Pleistocene megafaunal extinction events appear to have occurred over a time interval between ~46 and 24 ka B.P. prior to the LGM, and again over a shorter interval between ~15 and 11 ka B.P. near the end of the Pleistocene Epoch^{47,66}. Recently, Cooper *et al.*²⁵ investigated all megafaunal species, or major clades, with comprehensive radiocarbon-dated series, to determine the timings of regional or global extinctions, and invasions or replacements by conspecific or congeneric populations (Fig. 9). They determined 31 such events widely distributed across Eurasia and North America that involved animals having diverse ecological roles and life histories²⁵. The lack of megafaunal extinction events during the LGM, and to a lesser extent the YD stadial, suggests that cold environmental conditions were not an important driver of the extinctions, and Cooper *et al.*²⁵ found that the population transitions were instead significantly correlated with rapid climate shifts associated with the Dansgaard-Oeschger (D-O) interstadial warmings (Fig. 9). Because of the apparent lack of ecological turnovers related to similar interstadial events that frequently occurred before ~46 ka, when modern humans were mostly absent from Eurasia and North America, Cooper *et al.*²⁵ concluded that humans likely played a significant role in enhancing the effects of rapid climate change on Late Pleistocene megafaunal extinctions and population transitions²⁵.

The presence of two geochemically distinct microspherule populations found by us in Late Pleistocene skull fragments points to at least two episodes of cosmic impact, and/or different target source rocks, and the skull ages (~18–48 ka B.P.; Table S1; Fig. 9) indicate that perhaps a greater number of such episodes (~2–4) occurred. It is also unclear how many separate extinction events there were both before and after the LGM. Cooper *et al.*²⁵ noted a distinct cluster of events between ~37 and 32 ka, corresponding to D-O interstadials 5–7, and the question arises whether these extinctions with overlapping ages could have resulted from a single short-lived event. By comparing our ¹⁴C dates with the extinction age ranges in Fig. 9, it appears plausible that there could have been fewer discrete impact-related extinction events prior to the LGM, possibly occurring around 40–42 ka, 34–37 ka, and 27–30 ka, with another at the onset of the YD stadial (~13 ka)^{26–28}.

Modern humans have also been implicated in the Late Pleistocene megafaunal extinctions^{23–25}, but the temporal correspondence between these events both in Eurasia and North America seems to argue against their involvement (Fig. 9). The megafaunal extinctions and population transitions during MIS3 occurred in North America before modern humans had arrived, and in Eurasia over an extended period well after their arrival, whereas the terminal Pleistocene extinctions (MIS1–2) appear roughly coincident with modern humans' arrival in North America, but occurred in Europe long after they had become established there. It would appear that some mechanism other than intensive human hunting drove the extinctions in both locations over the same time intervals. Moreover, the lack of evidence for ecological disturbances associated with interstadial warmings prior to ~46 ka²⁵ suggests that rapid climate change might also have played a more limited, if any, role in the Late Pleistocene megafaunal extinctions.

The range in degree of fossil preservation, from weathered bones to frozen mummies, likely indicates the depth and/or timing of burial. Mummified carcasses and body parts were probably rapidly buried and frozen at deeper levels, whereas well-preserved bones were buried close enough to the surface to allow decomposition of the attached soft tissues before freezing, while weathered bones were exposed at the surface before burial by subsequent depositional events. Fraser and Burns⁹, however, noted “the position of bones of various ages near the lower contact of the Silt unit suggests... redeposition by events of considerable magnitude”. With the lack of evidence in the mucks for fluvial transport, such redeposition might have been accomplished by one or more impact-generated blast winds. During a bombardment episode, blast winds could have excavated and mixed bones of various ages, including those from animals that had already died of more common causes. Thus, the extensive breakage and disarticulation of skeletal elements in the Alaskan and Yukon mucks could have resulted from a relatively few episodes of cosmic bombardment.

Conclusions

Our results suggest that large amounts of melt-quenched impact spherules, associated with Pleistocene megafaunal remains, were deposited in the mucks of eastern Beringia after ~48 kyr. The SEM/EDS and Pt/Pd data we acquired indicates they are not cosmic, anthropogenic, or volcanic in origin (Fig. 8), but were most likely produced by hypervelocity airbursts and ground/ice impacts. Based on this evidence, and the damaged and disrupted character of the muck's vertebrate and botanical material documented by others^{6–9}, we conclude that some parts of the Beringian muck and Yedoma deposits were catastrophically emplaced during the Late Pleistocene by blast winds associated with multiple episodes of cosmic impact.

Blast winds from the impacts would have swept across the Beringian landscape flattening trees and killing, dismembering, and burying megafaunal carcasses or body parts, along with logs, branches, other plant material, with a matrix of redeposited loess in low-lying creek valleys. Normal depositional processes such as slope wash, creep, and mudflow would have continued within the valleys during the thousands or more years between blast events. The lack of microspherules in the primary loess (Table S1) indicates that it was emplaced between impact episodes and those microspherules found within the mucks were added to the remobilized primary loess as it was retransported by blast winds along with comminuted organic material and the damaged and fragmented vertebrate and plant remains.

The radiocarbon dates determined for the skull fragments of this study are too few to support any robust correlation with the Late Pleistocene extinction events²⁵. Further studies of fossils with well-established stratigraphic contexts are needed before the actual role of impacts in driving or contributing to the megafaunal extinctions can be inferred. Elevated Pt abundances^{53,67} and microspherules^{26,30,50,52} have also been associated with the YD-onset impact event^{26–28}, and our results suggest that the terminal megafaunal extinctions were the culmination at ~13 ka B.P. of a relatively small number of subsidiary episodes that occurred prior to the LGM during MIS3 (Fig. 9). Chaotically deposited arboreal plant material and the presence of megafaunal carcasses within the Ready Bullion and coeval upper Organic mucks of Alaska and the Yukon Territory (Fig. 2), respectively, suggest that extraterrestrial impacts might have continued into the Holocene Epoch.

Methods

The skull fragments assembled for this study are from Pleistocene vertebrate fossil collections curated at the American Museum of Natural History (AMNH) in New York City (Figs 4–6) and at the Yukon Government offices in Whitehorse (Fig. 7, S1–S4). Although collection locations are known for most of the fossils, they lack any useful stratigraphic information. Although the Yukon fossils had been subjected to little or no sample preparation and cleaning, the surfaces of the AMNH fossils had been cleaned and shellacked. In both cases, however, the selected skulls still contained significant amounts of host sediment, or dried muck, within them, and the included sediment was collected to determine if it contained any markers of extraterrestrial impact^{30,50}. The fine-grained sediment was shaken from each skull onto fresh pieces of 8 1/2 × 11-inch (21.6 × 27.9 cm) white copier paper, and then transferred to new plastic sample bags. Bone samples for radiocarbon dating (see Supplementary Information, “Analytical methods”) were taken from seven of the nine skulls using either a small handsaw or electric drill and hole-saw. Optimum samples for dating from two of the skulls (Table S1) were not obtained because they lacked enough thick, dense, and unweathered bone.

D. Muhs (USGS) collected samples of primary loess (Gold-Hill type), of equivalent and younger age to the mucks (Table S1), at the Halfway House, Chena Hot Springs Road, and Birch Hill sections near Fairbanks, Alaska. The geochronology of the Chena Hot Springs Road and Birch Hill sections is based on correlations with dated tephra and radiocarbon dates on wood, charcoal, or organic matter from soil horizons^{40,41}. Ages were assigned to the samples from these sections due to their close proximity to dated sediment horizons or from interpolation between them. Ages for samples from the Halfway House section were similarly assigned based on stratigraphic relations with dated tephra and geomagnetic-field-excursion horizons, and with thermoluminescence-age determinations^{68,69}.

Magnetic separates were extracted from bulk sediment slurries using a large neodymium (NdFeB) magnet (5.15 × 2.5 × 1.3 cm) wrapped in 4-mil plastic bags^{30,50}. Each magnetic grain fraction was dried, weighed, and sorted into four size sub-fractions of >150 µm, between 53 µm and 150 µm, between 38 µm and 53 µm, and <38 µm using a stack of ASTM sieves. Aliquots of each grain-size fraction were then examined under reflected light using a 200x–300x zoom microscope to manually count and photograph the candidate microspherules (Fig. S5). Microspherules are defined as being <2 mm in diameter, and those of this study were usually found within the smaller two size fractions of the Alaskan and Yukon muck samples. Forty-nine candidate microspherules from the mucks were mounted on SEM stubs for further analysis.

Details of the SEM and EDS techniques, AMS radiocarbon dating, and platinum and palladium analytical methods are given in the Supplementary Information, “Analytical methods”. The datasets generated and analysed during the current study are available from the corresponding author on reasonable request.

References

1. Froese, D. G. *et al.* The Klondike goldfields and Pleistocene environments of Beringia. *GSA Today* **19**, 4–10 (2009).
2. Hoffecker, J. F., Elias, S. A. & O'Rourke, D. H. Out of Beringia? *Science* **343**, 979–980 (2014).
3. Zazula, G. D. *et al.* Late Pleistocene steppe macrofossils in east Beringia. *Nature* **423**, 603 (2003).
4. Goetcheus, V. G. & Birks, H. H. Full-glacial upland tundra vegetation preserved under tephra in the Beringia National Park, Seward Peninsula, Alaska. *Quat. Sci. Rev.* **20**, 135–147 (2001).
5. Guthrie, R. D. *Frozen fauna of the mammoth steppe: The story of Blue Babe* (University of Chicago Press, 1990).
6. Tuck, R. Origin of the muck-silt deposits at Fairbanks, Alaska. *Geol. Soc. Am. Bull.* **51**, 1295–1310 (1940).
7. Taber, S. Perennially frozen ground in Alaska: Its origin and history. *Geol. Soc. Am. Bull.* **54**, 1433–1548 (1943).
8. Péwé, T. L. Quaternary Geology of Alaska. *U.S. Geol. Surv. Prof. Pap.* **835** (1975).
9. Fraser, T. A. & Burn, C. R. On the nature and origin of “muck” deposits in the Klondike area, Yukon Territory. *Can. J. Earth Sci.* **34**, 1333–1344 (1997).
10. Shapiro, B. & Cooper, A. Beringia as an Ice Age genetic museum. *Quat. Res.* **60**, 94–100 (2003).
11. Haile, J. *et al.* Ancient DNA reveals late survival of mammoth and horse in interior Alaska. *PNAS* **106**, 22,352–22,357 (2009).
12. Maddren, A. G. Smithsonian exploration in Alaska in 1904, in search of mammoth and other fossil remains. *Smithsonian Misc. Coll.* **49** (1905).
13. Gilmore, C. W. Smithsonian exploration in Alaska in 1907 in search of Pleistocene fossil vertebrates. *Smithsonian Misc. Coll.* **51**, 1–38 (1908).
14. Quackenbush, L. S. Notes on Alaskan mammoth expedition of 1907 and 1908. *Am. Mus. Nat. Hist. Bull.* **26**, 87–130 (1909).
15. Dawson, G. M. Notes on the occurrence of mammoth remains in the Yukon district of Canada and in Alaska. *Quart. J. Geol. Soc. London* **50**, 1–9 (1894).
16. Péwé, T. L. *Geomorphology of the Fairbanks area, Alaska*. Ph.D. thesis (Stanford University, 1952).
17. Frick, C. Alaska's frozen fauna. *Nat. Hist.* **30**, 71–80 (1930).
18. Guthrie, R. D. Paleoecology of the large-mammal community in interior Alaska during the Late Pleistocene. *Am. Midland Nat.* **79**, 346–363 (1968).
19. Harington, C. R. *Annotated bibliography of Quaternary vertebrates of northern North America—with radiocarbon dates* (University of Toronto Press, 2003).
20. Guthrie, R. D. New carbon dates link climatic change with human colonization and Pleistocene extinctions. *Nature* **441**, 207–209 (2006).

21. Kotler, E. & Burn, C. R. Cryostratigraphy of the Klondike “muck” deposits, west-central Yukon Territory. *Can. J. Earth Sci.* **37**, 849–861 (2000).
22. Péwé, T. L., Westgate, J. A., Preece, S. J., Brown, P. M. & Leavitt, S. W. Late Pleistocene Dawson Cut Forest Bed and new tephrochronological findings in the Gold Hill Loess, east-central Alaska. *Geol. Soc. Am. Bull.* **121**, 294–320 (2009).
23. Haynes, B. & Eiselt, B. S. The power of Pleistocene hunter-gatherers: Forward and backward searching for evidence about mammoth extinction in *Extinctions in near time: Causes, contexts, and consequences* (ed. MacPhee, R. D. E.) 71–93 (Kluwer Academic/Plenum Publishers, 1999).
24. Martin, P. S. *Twilight of the mammoths: Ice age extinctions and the rewilding of America* (University of California Press, 2005).
25. Cooper, A. *et al.* Abrupt warming events drove Late Pleistocene Holarctic megafaunal turnover. *Science* **349**, 602–606 (2015).
26. Firestone, R. B. *et al.* Evidence for an extraterrestrial impact 12,900 years ago that contributed to the megafaunal extinctions and the Younger Dryas cooling. *PNAS* **104**, 16,016–16,021 (2007).
27. Kennett, D. J. *et al.* Shock-synthesized hexagonal diamonds in Younger Dryas boundary sediments. *PNAS* **106**, 12,623–12,628 (2009).
28. Melott, A. L., Thomas, B. C., Dreschhoff, G. & Johnson, C. K. Cometary airbursts and atmospheric chemistry: Tunguska and a candidate Younger Dryas event. *Geology* **38**, 355–358 (2010).
29. Surovell, T. A. *et al.* An independent evaluation of the Younger Dryas extraterrestrial impact hypothesis. *PNAS* **106**, 18,155–18,158 (2009).
30. Bunch, T. E. *et al.* Very high-temperature impact melt products as evidence for cosmic airbursts and impacts 12,900 years ago. *PNAS* **109**, E1903–E1912 (2012).
31. Farrand, W. R. Frozen mammoths and modern geology. *Science* **133**, 729–735 (1961).
32. Keim, C. J. Aghvook, white eskimo: *Otto Geist and Alaskan archaeology* (University of Alaska Press, 1969).
33. Kring, D. A. Air blast produced by the Meteor Crater impact event and a reconstruction of the affected environment. *Meteor. & Planet. Sci.* **32**, 517–530 (1997).
34. Asher, D. J., Clube, S. V. M., Napier, W. M. & Steel, D. I. Coherent catastrophism. *Vist. Astron.* **38**, 1–27 (1994).
35. Froese, D. G., Westgate, J. A., Reyes, A. V., Enkin, R. J. & Preece, S. J. Ancient permafrost and a future warmer arctic. *Science* **321**, 1648 (2008).
36. Sanborn, P. T., Smith, C. A. S., Froese, D. G., Zazula, G. D. & Westgate, J. A. Full-glacial paleosols in perennially frozen loess sequences, Klondike goldfields, Yukon Territory, Canada. *Quat. Res.* **66**, 147–157 (2006).
37. Wilkerson, A. S. Some frozen deposits in the goldfields of interior Alaska: A study of the Pleistocene deposits of Alaska. *Am. Mus. Novit.* **525**, 1–22 (1932).
38. Péwé, T. L. Origin of the upland silt near Fairbanks, Alaska. *Geol. Soc. Am. Bull.* **66**, 699–724 (1955).
39. Péwé, T. L. An observation on wind-blown silt. *J. Geology* **59**, 399–401 (1951).
40. Muhs, D. R. *et al.* Stratigraphy and palaeoclimatic significance of late Quaternary loess-paleosol sequences of the Last Interglacial–Glacial cycle in central Alaska. *Quat. Sci. Rev.* **22**, 1947–1986 (2003).
41. Muhs, D. R. *et al.* Paleoclimatic significance of chemical weathering in loess-derived paleosols of subarctic central Alaska. *Arct., Antarct., Alp. Res.* **40**, 396–411 (2008).
42. Péwé, T. L. Quaternary Stratigraphic Nomenclature in Central Alaska. *U.S. Geol. Surv. Prof. Pap.* 862 (1975).
43. Westgate, J. A., Stemper, B. A. & Péwé, T. L. A 3 m.y. record of Pliocene–Pleistocene loess in interior Alaska. *Geology* **18**, 858–861 (1990).
44. MacPhee, R. D. E. *et al.* Chronologies and extinction dynamics of the Late Quaternary mammalian megafauna of the Taimyr Peninsula, Russian Federation. *J. Archaeol. Sci.* **29**, 1017–1042 (2002).
45. Pfizenmayer, E. W. *Siberian Man and Mammoth* (Blackie and Son, Ltd., 1939).
46. Fisher, D. C. *et al.* Anatomy, death, and preservation of a woolly mammoth (*Mammuthus primigenius*) calf, Yamal Peninsula, northwest Siberia. *Quat. Int.* **255**, 94–105 (2012).
47. Harington, C. R. Late Pleistocene mummified mammals. *Encycl. Quat. Sci.* 3197–3202 (Elsevier, 2007).
48. Mathur, S. C., Gaur, S. D., Loyal, R. S., Tripathi, A. & Sisodia, M. S. Spherules from the Late Cretaceous phosphorite of the Fatehgarh Formation, Barmer Basin, India. *Gondwana Res.* **8**, 579–584 (2005).
49. Glass, B. P., Huber, H. & Koerber, C. Geochemistry of Cenozoic microtektites and clinopyroxene-bearing spherules. *Geochim. Cosmochim. Acta* **69**, 3971–4006 (2004).
50. Wittke, J. H. *et al.* Evidence for deposition of 10 million tonnes of impact spherules across four continents 12,800 y ago. *PNAS* **110**, E2088–E2097 (2013).
51. Rudnick, R. I. & Gao, S. Composition of the continental crust in *The Crust* (eds Holland, H. D. & Turekian, K. K.) 1–64 (Gulf Professional Publishing, 2005).
52. Andronikov, A. V. *et al.* Implications from chemical, structural and mineralogical studies of magnetic microspherules from around the lower Younger Dryas boundary (New Mexico, USA). *Geografiska Annaler, Series A, Phys. Geog.* **98**, 1–21 (2016).
53. Moore, C. R. *et al.* Widespread platinum anomaly documented at the Younger Dryas onset in North American sedimentary sequences. *Sci. Reports* **7**, <https://doi.org/10.1038/srep44031> (2017).
54. Rubtsov, V. *The Tunguska Mystery* (Springer, 2009).
55. White, C. S., Jones, R. K., Damon, E. G., Fletcher, E. R., & Richmond, D. R. *The Biodynamics of Air Blast, DNA 2738T* (Defense Nuclear Agency, 1971).
56. Lyman, R. L. Broken bones, bone expediency tools, and bone pseudotools: Lessons from the blast zone around Mount St. Helens, Washington. *Am. Antiq.* **49**, 315–333 (1989).
57. Covey, D. C. Blast and fragment injuries of the musculoskeletal system. *J. Bone Joint Surg.* **84**, 1221–1234 (2002).
58. Turco, R. P. *et al.* An analysis of the physical, chemical, optical, and historical impacts of the 1908 Tunguska meteor fall. *Icarus* **50**, 1–52 (1982).
59. Roddy, D. J. & Shoemaker, E. M. Meteor Crater (Barringer Meteorite Crater), Arizona: Summary of impact conditions. *Meteoritics* **30**, 567 (1995).
60. Anderson, D. C. Observations on *Thomomys talpoides* in the region affected by the eruption of Mount St. Helens. *J. Mamm.* **63**, 652–655 (1982).
61. Clube, S. V. M. & Napier, W. M. The microstructure of terrestrial catastrophism. *Mon. Not. R. Astron. Soc.* **211**, 953–968 (1984).
62. Steel, D. I. & Asher, D. J. The orbital dispersion of the macroscopic Taurid objects. *Mon. Not. R. Astron. Soc.* **280**, 806–822 (1996).
63. Napier, W. M. Palaeolithic extinctions and the Taurid Complex. *Mon. Not. R. Astron. Soc.* **405**, 1901–1906 (2010).
64. Napier, B., Asher, D., Bailey, M. & Steel, D. Centaurs as a hazard to civilization. *Astron. & Geophys.* **56**, 6–24 (2015).
65. Napier, B. & Asher, D. The Tunguska impact event and beyond. *Astron. & Geophys.* **50**, 1–18 (2009).
66. Sutcliffe, A. J. *On the Track of Ice Age Mammals* (Harvard University Press, 1985).
67. Petaev, M. I., Huang, S., Jacobsen, S. B. & Zindler, A. Large Pt anomaly in the Greenland ice core points to a cataclysm at the onset of Younger Dryas. *PNAS* **110**, 12917–12920 (2013).
68. Oches, E. A., Banerjee, S. K., Solheid, P. A. & Frechen, M. High-resolution proxies of climate variability in the Alaskan loess record in *Dust Aerosols, Loess Soils and Global Change* (ed. Busacca, A. J. *et al.*) 167–170 (Washington State University Miscellaneous Publication No. MISC0190, 1998).

69. Jensen, B. J. L., Evans, M. E., Froese, D. G. & Kravchinsky, V. A. 150,000 years of loess accumulation in central Alaska. *Quat. Sci. Rev.* **135**, 1–23 (2016).
70. Ehlers, J. & Givvard, P. L. *Quaternary glaciations—Extent and chronology, Part II: North America* (Elsevier, 2004).
71. Rahmstorf, S. O. *et al.* A new Greenland ice core chronology for the last glacial termination. *J. Geophys. Res.* **111**, D06102 (2006).
72. Svensson, A. *et al.* A 60,000 year Greenland stratigraphic ice core chronology. *Clim. Past* **4**, 47–57 (2008).
73. Dansgaard, W. *et al.* Evidence for general instability of past climate from a 250-kyr ice-core record. *Nature* **364**, 218–2204 (1993).
74. Broecker, W., Bond, G., Klas, M., Clark, E. & McManus, J. Origin of the northern Atlantic's Heinrich events. *Clim. Dyn.* **6**, 265–273 (1992).

Acknowledgements

For their invaluable assistance we thank Grant Zazula at the Yukon Government Heritage Resources Department in Whitehorse, Ruth O’Leary and Judy Galkin at the American Museum of Natural History in New York, and Diane Tyink at the University of New Mexico, Maxwell Museum of Anthropology’s Photo Archives in Albuquerque. We are grateful to Dan Muhs (USGS) for providing the primary loess samples, and to Jennifer Parlier and David Kimbel for making many of the magnetic separates. Patrick Muffler, Carl Wentworth, Mike Clynne, Summer Praetorius (USGS), Bill Napier (U. Buckingham), Jim Kennett (UCSB), and an anonymous reviewer provided constructive reviews that significantly improved earlier versions of the manuscript. The ideas and conclusions presented in this paper are those of the authors alone, and any use of trade, firm, or product names is for descriptive purposes only and does not imply endorsement by the U.S. Government.

Author Contributions

J.T.H. and R.B.F. conceived of the project and collected fossils in Whitehorse, Y.T., J.T.H. collected fossils at the AMNH in NY, extracted the sediment samples, and wrote most of the manuscript. A.W., J.C.W., and T.E.B. processed the magnetic separates and conducted the SEM and EDS analyses.

Additional Information

Supplementary information accompanies this paper at <https://doi.org/10.1038/s41598-017-16958-2>.

Competing Interests: The authors declare that they have no competing interests.

Publisher's note: Springer Nature remains neutral with regard to jurisdictional claims in published maps and institutional affiliations.



Open Access This article is licensed under a Creative Commons Attribution 4.0 International License, which permits use, sharing, adaptation, distribution and reproduction in any medium or format, as long as you give appropriate credit to the original author(s) and the source, provide a link to the Creative Commons license, and indicate if changes were made. The images or other third party material in this article are included in the article’s Creative Commons license, unless indicated otherwise in a credit line to the material. If material is not included in the article’s Creative Commons license and your intended use is not permitted by statutory regulation or exceeds the permitted use, you will need to obtain permission directly from the copyright holder. To view a copy of this license, visit <http://creativecommons.org/licenses/by/4.0/>.

© The Author(s) 2017

Supplementary Information:

Impact-related microspherules in Late Pleistocene Alaskan and Yukon “muck” deposits signify recurrent episodes of catastrophic emplacement

Jonathan T. Hagstrum^{1,*}, Richard B. Firestone², Allen West³, James C. Weaver⁴, and
Ted E. Bunch⁵

¹U.S. Geological Survey, Menlo Park, CA 94025, USA

²Lawrence Berkeley National Laboratory, Berkeley, CA 94720, USA

³Comet Research Group, Prescott, AZ 86301, USA

⁴Wyss Institute for Biologically Inspired Engineering, Harvard University, Cambridge, MA 02138,
USA

⁵School of Earth Science and Environmental Sustainability, Northern Arizona University,
Flagstaff, AZ 86011, USA

*To whom correspondence should be addressed. Email: jhag@usgs.gov

Quaternary stratigraphy

The Quaternary stratigraphy of surficial deposits in central Alaska is similar to that in the western Yukon Territory and is depicted schematically in Figure 2. The regional bedrock is mainly Paleozoic to Mesozoic schist, slate, and gneiss with local masses of basalt, quartz diorite, and granite^{S1}. The oldest unconsolidated deposit is the gold-bearing Cripple Gravel of late Tertiary age^{S2-S3}, and the next youngest unit is the poorly stratified auriferous Fox Gravel that includes an occasional waterworn megafaunal bone or wood fragment^{S4}. Equivalent to the Alaskan gravels are the Late Pliocene White Channel and Early Pleistocene Klondike Gravels of the Yukon Territory^{S5}. The Tanana Formation is thought to be contemporaneous with the Fox Gravel, and is a ~1–25 m-thick inactive solifluction layer, which is comprised of schist and quartz fragments within a sandy matrix^{S2,S6}.

Overlying the Tanana Formation is the Gold Hill Loess (Fig. 2), composed of thick frozen layers of massive aeolian silt, emplaced between ~2 Ma and ~130 ka B.P., that makes up the majority of loess beds in the Fairbanks region^{S2,S7}. Muhs *et al.*^{S8-S9}, however, have sampled upland loess sections in the Fairbanks region equivalent in age to the younger Goldstream Formation (see below), indicating that Gold Hill-type loess can be younger than ~130 ka. The Gold Hill Loess represents several intervals of deposition and erosion, and major unconformities divide the formation into three members. The upper two members include a number of tephra beds, which aid in identifying these units, but no tephra have been found in the lower member^{S6-S7}. Remains of small arctic and alpine mammals are found throughout the Gold Hill Loess, and, although megafaunal bones are included, no frozen carcasses have been found within it^{S6}. At the base of the

Gold Hill Loess's middle member is the Dawson Cut Forest Bed (~2 Ma), which is a ~1–3 m thick layer containing peat lenses, logs and forest beds^{S7}.

The Goldstream Formation (Fig. 2), also known as the Goldstream “muck”^{S4}, unconformably overlies the Gold Hill Loess and locally, on lower slopes, the Eva Forest Bed^{S10}, Fox Gravel, or Tanana Formation^{S2}. One of the most widespread formations in valley bottoms of central Alaska, the Goldstream Formation has been called the “most interesting” by Péwé^{S2} and is also perhaps the most enigmatic. The formation consists of poorly bedded frozen muck that is ~10–35 m thick, contains abundant megafaunal bones, and on rare occasions, frozen partial carcasses^{S11-S12}. It also contains abundant organic material including finely disseminated plant fragments and some layers of peat and larger plant debris^{S2,S12}, as well as the Chatanika Ash Bed (~14 ka B.P.) near the upper middle part of the formation^{S2,S6}. The Goldstream Formation formed between ~125 and 10 ka B.P., is mostly Wisconsinan in age^{S2,S7}, and roughly correlates with the lower Silt unit or King Solomon Formation of the Klondike mucks^{S5,S13}. There are several tephra beds within the King Solomon Formation including the Dawson tephra dated at ~25 ka B.P.^{S5,S14}.

The Ready Bullion Formation and laterally equivalent Engineer Loess (Fig. 2) unconformably overlie the Goldstream Formation. In creek-valley centers, the Ready Bullion Formation is ~1–10 m thick, thins upslope, and grades into the Engineer Loess, which varies in thickness between ~1 and 7 m^{S2}. The Ready Bullion Formation is a frozen, poorly to well-stratified retransported loess overlying the Giddings Forest Bed (~10 ka B.P.)^{S15}. The Engineer Loess contains upland silt of Holocene age, and both of these units are overlain by modern soils.

The Ready Bullion Formation additionally contains abundant and extremely well preserved plant material including logs and rooted stumps, branches and sticks, peat lenses, and carbonized plant fragments^{S2}. Fewer vertebrate remains (including frozen carcasses) are found in the Ready Bullion Formation and are of Holocene animal forms that still live in the region^{S12}. The upper Organic unit of the Klondike district (≤ 13 m thick) is equivalent to the Ready Bullion Formation and also consists of muck with abundant peat beds and plant macrofossils. The chaotic distribution of its enclosed logs and branches has been interpreted as representing the “occasional catastrophic accumulation” of these materials^{S5}.

Analytical methods

Scanning electron microscopy (SEM) and energy dispersive X-ray spectroscopy (EDS) techniques were used to distinguish between microspherules of impact origin and rounded detrital grains, authigenic framboids, or microspherules of volcanic, cosmic and anthropogenic origins^{S16-S17}. Definitive identifications of impact-related microspherules can be made from SEM images showing dendritic-crystal (or skeletal) surface microstructures caused by high-temperature melting and quenching of target rock during impact cratering or atmosphere airbursts interacting with the ground surface^{S16-S17}. In addition, EDS analyses were essential in providing the elemental composition data necessary to identify modes of formation for the candidate microspherules. Standard analytical techniques were used for EDS analyses, which were acquired multiple times and/or encompassed areas measuring $\sim 50\%$ of the diameter of each analysed microspherule, and calibrated using appropriate reference standards; the EDS compositions are considered to be precise within approximately ± 5 wt.%^{S18}.

Accelerator mass spectrometer (AMS) radiocarbon dates for the fossil skull fragments, listed in Table S1, were determined on collagen extractions made at the commercial PaleoResearch Institute in Golden, Colorado. After surface cleaning the bone samples were decalcified with cold, dilute hydrochloric acid. Further processing was undertaken to remove particulate contamination, humates, fulvic acids, and any incidentally produced mineral salts. The purified collagen samples were sealed in quartz tubes, heated to convert the sample's carbon to CO₂ gas, and, along with a set of standards, blanks, and laboratory background samples, submitted to either the Keck Carbon Cycle AMS Facility at the University of California, Irvine, or the Center for Applied Isotope Studies at the University of Georgia, Athens. Following determination of ¹⁴C to ¹²C and ¹³C ratios, the times elapsed since the animals' deaths were calculated as conventional radiocarbon ages and calibrated ages using the Intcal04 curves in the program OxCal, version 3.10^{S19-S20}.

Bulk sediment samples of ~30–50 g each from four bison skulls and three primary loess localities (Table S1) were analysed for platinum (Pt) and palladium (Pd) abundances at Activation Laboratories Ltd., Ontario, Canada, using fire assay and inductively coupled plasma mass spectrometry (ICP-MS), following the methods of Hoffman and Dunn^{S21}. Samples submitted from the fossil skulls were limited to those having enough original material remaining after the magnetic separates had been made. Accuracy of the laboratory results was verified using blanks and known standards, and the analyses have a lower detection limit of 0.1 parts per billion (ppb; Table S2).

Historical note (Figure 3 photos)

The photos in Figure 3 were taken when Frank C. Hibben, a University of New Mexico archeologist, and his wife Eleanor (aka Brownie) visited Alaska in the summer of 1941. They had come in search of evidence in support of the migration of North America's early human inhabitants across Beringia. As Eleanor recorded in her diary (courtesy of the Maxell Museum of Anthropology, University of New Mexico), the Hibbens visited Fairbanks to meet Otto Geist and see for themselves the megafaunal bones he was famous for collecting^{S22}. On the first day, Sunday, August 3, they missed meeting up with Geist, but decided to drive out to the Cripple Creek mine without him. Eleanor wrote in her diary about the trip, "...we found 2 places where the bones were coming out of the muck, and collected several specimens of bison skulls, mammoth and mastodon remains, and various teeth. Also found some things in Geist's discard piles." One is presumably shown in Figure 3a.

On their second day in Fairbanks, August 4, they returned to Cripple Creek, this time accompanied by Geist (Fig. 3b), and, among other things, "...examined the 4 ash layers of volcanic eruptions, the lower of which he [Geist] thinks eliminated the animals." Apparently, Geist had explained to them his ideas concerning the muck deposits' origins (see Introduction). Although Frank Hibben's subsequent publications (e.g., "The Lost Americans"^{S23}) gave explanations of the mucks that closely resembled Otto Geist's views^{S22}, they were presented without attribution.

References

- S1. Robinson, M. S., Smith, T. E. & Metz, P. A. Bedrock geology of the Fairbanks mining district. *AK Div. Geol. Geophys. Surv.* (1990).

- S2. Péwé, T. L. Quaternary Stratigraphic Nomenclature in Central Alaska. *U.S. Geol. Surv. Prof. Pap.* 862 (1975).
- S3. Westgate, J. A., Stemper, B. A. & Péwé, T. L. A 3 m.y. record of Pliocene-Pleistocene loess in interior Alaska. *Geology*, **18**, 858-861 (1990).
- S4. Péwé, T. L. *Geomorphology of the Fairbanks area, Alaska*. Ph.D. thesis (Stanford University, 1952).
- S5. Fraser, T. A. & Burn, C. R. On the nature and origin of “muck” deposits in the Klondike area, Yukon Territory. *Can. J. Earth Sci.*, **34**, 1333-1344 (1997).
- S6. Péwé, T. L. Quaternary stratigraphy of the Fairbanks area, Alaska: *U.S. Geol. Surv. Circ.* 1026, 72-77 (1989).
- S7. Péwé, T. L., Westgate, J. A., Preece, S. J., Brown, P. M. & Leavitt, S. W. Late Pleistocene Dawson Cut Forest Bed and new tephrochronological findings in the Gold Hill Loess, east-central Alaska. *Geol. Soc. Am. Bull.*, **121**, 294-320 (2009).
- S8. Muhs, D. R. *et al.* Stratigraphy and palaeoclimatic significance of late Quaternary loess-palaeosol sequences of the Last Interglacial–Glacial cycle in central Alaska. *Quat. Sci. Rev.*, **22**, 1947–1986 (2003).
- S9. Muhs, D. R. *et al.* Paleoclimatic significance of chemical weathering in loess-derived paleosols of subarctic central Alaska, *Arct., Antarct., Alp. Res.*, **40**, 396-411 (2008).
- S10. Berger, G. W. & Péwé, T. L. Last Interglacial age of the Eva Forest Bed, central Alaska, from thermoluminescence dating of bracketing loess. *Quat. Sci. Rev.*, **20**, 485-498 (2001).
- S11. Guthrie, R. D. *Frozen fauna of the mammoth steppe: The story of Blue Babe* (University of Chicago Press, 1990).
- S12. Péwé, T. L. Quaternary Geology of Alaska. *U.S. Geol. Surv. Prof. Pap.*, **835** (1975).
- S13. Kotler, E. & Burn, C. R. Cryostratigraphy of the Klondike “muck” deposits, west-central Yukon Territory. *Can. J. Earth Sci.*, **37**, 849–861 (2000).

- S14. Froese, D. G. *et al.* The Klondike goldfields and Pleistocene environments of Beringia. *GSA Today*, **19**, 4-10 (2009).
- S15. Péwé, T. L., Berger, G. W., Westgate, J. A., Brown, P. M. & Leavitt, S. W. Eva Inter glaciation Forest Bed, Unglaciated East-Central Alaska: Global Warming 125,000 Years Ago. *Geol. Soc. Am. Spec. Pap.* 319 (1997).
- S16. Bunch, T. E. *et al.* Very high-temperature impact melt products as evidence for cosmic airbursts and impacts 12,900 years ago. *PNAS*, **109**, E1903-E1912 (2012).
- S17. Wittke, J. H. *et al.* Evidence for deposition of 10 million tonnes of impact spherules across four continents 12,800 y ago. *PNAS*, **110**, E2088-E2097 (2013).
- S18. Goldstein, J. I. *et al.* *Scanning Electron Microscopy and X-ray Microanalysis: A Text for Biologists, Materials Scientists, and Geologists* (Springer Science & Business Media, 2013).
- S19. Ramsey, C. B. OxCal. 3.1 ed. <http://www.rlaha.ox.ac.uk/oxcal/oxcal.htm> (2005).
- S20. Reimer, P. J. *et al.* IntCal09 and Marine09 radiocarbon age calibration curves, 0-50,000 years cal BP. *Radiocarbon*, **51**, 1111-1150 (2009).
- S21. Hoffman, E. L. & Dunn, B. Sample preparation and bulk analytical methods for PGE in *The Geology, Geochemistry and Mineral Beneficiation of Platinum Group Elements* (ed. Cabri, L. J.) 1-11 (Canadian Institute of Mining, Metallurgy and Petroleum, 2002).
- S22. Keim, C. J. *Aghvook, white eskimo: Otto Geist and Alaskan archaeology* (University of Alaska Press, 1969).
- S23. Hibben, F. C. *The Lost Americans: The pre-Indian hunters whose bones, tools, and weapons reveal human life of 8,000-30,000 years ago* (Thomas Y. Crowell Company, 1946).
- S24. Jensen, B. J. L., Evans, M. E., Froese, D. G. & Kravchinsky, V. A. 150,000 years of loess accumulation in central Alaska. *Quat. Sci. Rev.*, **135**, 1-23 (2016).

TABLE S1. “MUCK” SEDIMENT SAMPLES, MAGNETIC SEPARATES, AND MICROSPHERULES FROM ALASKAN AND YUKON PLEISTOCENE MEGAFAUNAL FOSSILS AND ALASKAN PRIMARY LOESS SECTIONS

Source ¹	Source ID ¹	Location	Age ²	Sediment ³ sample	Magnetic ⁴ separates	Magnetic ⁵ spherules	Carbonate ⁶ spherules
Bison skull	A-501-1027	Fairbanks, AK	18,635 ± 65	45.20*	1.94	16,970	0
Bison skull	Y-301.16	Klondike, YT	29,065 ± 105	26.00	0.13	3210	0
Rangifer skull	Y-109.8	Klondike, YT	30,125 ± 275	63.40	1.06	0	0
Bison skull	Y-3.9	Klondike, YT	37,000 ± 185	30.40	1.35	1050	0
Bison skull	Y-406.1	Klondike, YT	40,155 ± 245	60.00*	2.15	1950	0
Bison skull	Y-3.28	Klondike, YT	40,950 ± 1500	83.50*	0.77	6230	140
Mammoth skull	A-478-3499	Fairbanks, AK	48,200 ± 2750	64.80	1.05	17,800	0
Bison skull	A-698-2022/23	Fairbanks, AK	<i>undated</i>	24.70	0.70	9720	0
Bison skull	Y-404-716	Klondike, YT	<i>undated</i>	32.11*	0.42	0	0
Primary loess	AK-211	Halfway House	~9,900	61.84*	9.72	0	0
Primary loess	AK-213	Halfway House	~11,600	62.84	4.92	0	0
Primary loess	AK-225	Halfway House	~54,200	58.96*	3.47	0	0
Primary loess	AK-906A	Chena Hot Springs Road	~9,400	63.30*	1.88	0	0
Primary loess	AK-915	Chena Hot Springs Road	~36,200	60.50	1.49	17(?)	0
Primary loess	AK-924	Chena Hot Springs Road	~40,800	60.54	3.38	0	0
Primary loess	AK-720	Birch Hill	~34,000	51.91	1.08	0	0
Primary loess	AK-728	Birch Hill	~41,500	60.60	1.54	0	0

¹Alaskan (AK) fossils from the American Museum of Natural History collection (A-) in New York City, and Yukon Territory (YT) fossils from the Territorial Government collection (Y-) in Whitehorse. Alaskan and Yukon samples are presumably from the Goldstream and King Solomon Formations, respectively. The Alaskan primary loess samples (AK-) were collected by D. Muhs (USGS) at the sections indicated in the lower half of the table. These primary loess samples are equivalent in age to the mucks, but do not appear in T. Péwé's stratigraphic classification (Fig. 2; Supplementary Information, “Quaternary stratigraphy”).

²CAL yr B.P. (1σ) bone collagen dates determined by the PaleoResearch Institute, Golden, CO; loess sample age estimates (CAL yr B.P.) are based on radiocarbon and other dates listed in Muhs et al.^{S8,S9} and Jensen et al.^{S24} (see text)

³Weight of sediment samples (g); *sediment sample submitted for platinum and palladium analyses (see Table S2)

⁴Weight of magnetic separates (g)

⁵Number of magnetic microspherules/kg; only one spherical particle of unknown origin (~15-micron diameter) was found in sample AK-915, which is equivalent to ~17 microspherules/kg

⁶Number of carbonate microspherules/kg

TABLE S2. PLATINUM AND PALLADIUM ANALYSES FOR SEDIMENT FROM ALASKAN AND YUKON PLEISTOCENE FOSSILS AND ALASKAN PRIMARY LOESS SECTIONS

Source ¹	Source ID ¹	Location	Pt ²	Pd ³	Pt/Pd
Bison skull	A-501-1027	Fairbanks, AK	3.9	1.0	3.9
Bison skull	Y-406.1	Klondike, YT	3.1	0.9	3.4
Bison skull	Y-3.28	Klondike, YT	2.2	1.2	1.8
Bison skull	Y-404-716	Klondike, YT	0.9	1.1	0.8
Primary loess	AK-211	Halfway House	1.3	1.9	0.7
Primary loess	AK-225	Halfway House	1.1	1.5	0.7
Primary loess	AK-906A	Chena Hot Springs Road	0.8	1.6	0.5

¹Alaskan (A-, AK) and Yukon Territory (Y-, YT) fossil sources, IDs, and locations as given in Table S1

²Platinum (Pt) abundances in parts per billion (ppb) with a lower detection limit of 0.1 ppb

³Palladium (Pd) abundances in ppb with a lower detection limit of 0.1 ppb

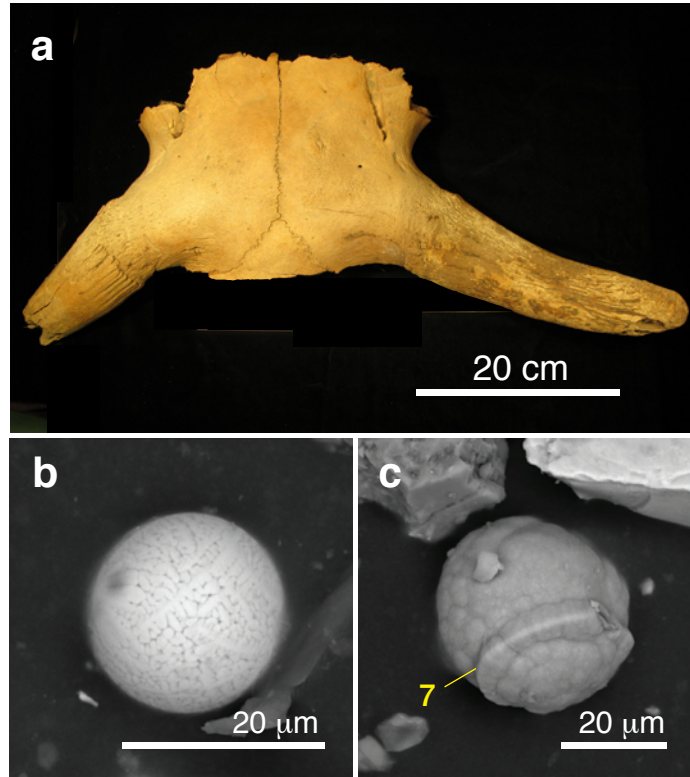


Figure S1. (a) Photograph of Yukon bison skull (Y-406.1; *Bison priscus*) from the Yukon Territorial Government collection in Whitehorse recovered at Lower Quartz Creek on 24 July 2011. The skull has been dated at $40,155 \pm 245$ CAL yr B.P. (Table S1). (b-c) SEM images of two microspherules magnetically separated from fine-grained sediment contained within the skull. Yellow number 7 indicates an apparent aerodynamic flange.

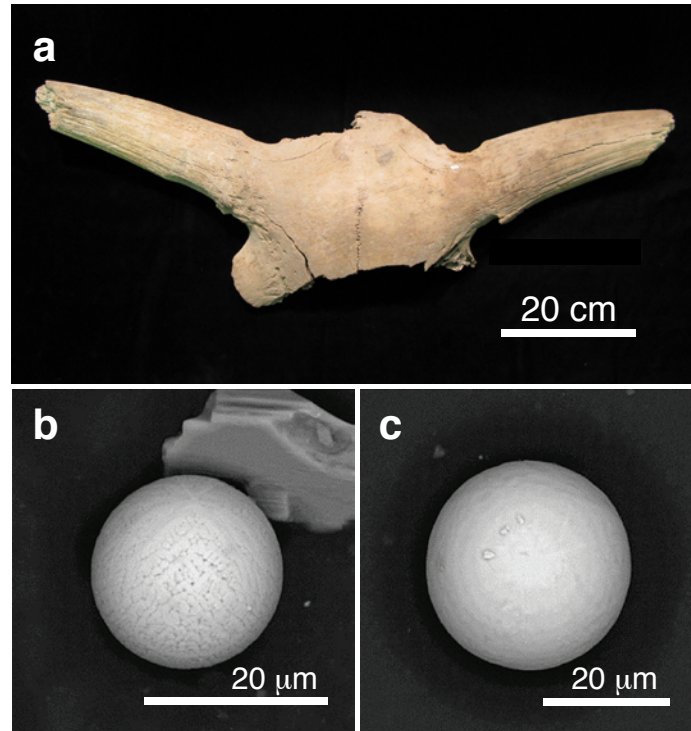


Figure S2. (a) Photograph of Yukon bison skull Y-3.9 (*Bison priscus*) from the Territorial Government collection recovered at Lower Quartz Creek in the Klondike district. The skull has been dated at $37,000 \pm 185$ CAL yr B.P. (Table S1). (b-c) SEM images of two microspherules magnetically separated from fine-grained sediment contained within the skull.

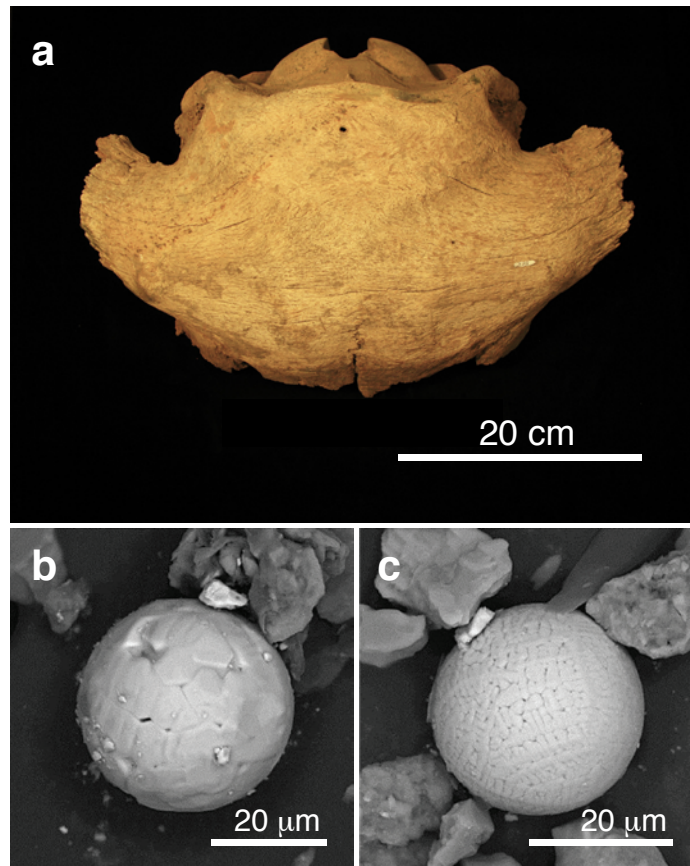


Figure S3. (a) Photograph of Yukon bison skull Y-3.28 (*Bison priscus*) from the Territorial Government collection recovered in the Klondike district. The skull has been dated at $40,950 \pm 500$ CAL yr B.P. (Table S1). (b-c) SEM images of two microspherules magnetically separated from fine-grained sediment contained within the skull.



Figure S4. Photographs of (a) Rangifer Y-109.8 and (b) Yukon bison Y-404.716 (*Bison priscus*) skulls from the Territorial Government collection recovered in the Klondike district that contained sediment but no magnetic microspherules (Table S1). Notably, the rangifer skull is the least damaged of the skulls collected for this study.

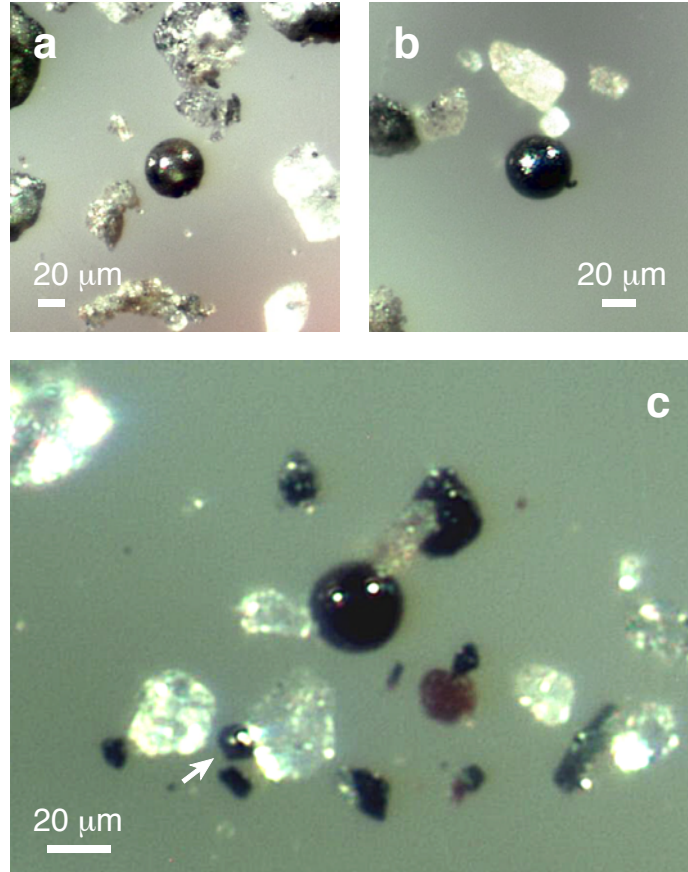


Figure S5. Microspherules under reflected light (a, b) from bison skull A-501-1027 (Fig. 4); and (c) from mammoth skull A-478-3499 (Fig. 5); note smaller microspherule at lower left (white arrow).